

Recombinant Mouse App protein, His-tagged

Cat. No. App-5746M **Lot. No.** (See product label)

SPECIFICATION

Product Overview	Recombinant Mouse App aa. (Leu18~Val286 (Accession # P12023)) fused with N-terminal His tag was produced in E. coli cells.
Species	Mouse
Source	E.coli
ProteinLength	Leu18~Val286
Form	Freeze-dried powder
Molecular Mass	Predicted Molecular Mass: 31.2kDa
Endotoxin	<1.0EU per 1g (determined by the LAL method)
Purity	>95%
Characteristic	The isoelectric point is 4.3.
Applications	SDS-PAGE; WB; ELISA; IP.
Stability	The thermal stability is described by the loss rate. The loss rate was determined by accelerated thermal degradation test, that is, incubate the protein at 37°C for 48h, and no obvious degradation and precipitation were observed. The loss rate is less than 5% within the expiration date under appropriate storage condition.

 Tel: 1-631-559-9269 1-516-512-3133

 Email: info@creative-biomart.com  Fax: 1-631-938-8127

 45-1 Ramsey Road, Shirley, NY 11967, USA

Storage	Avoid repeated freeze/thaw cycles. Store at 2-8°C for one month. Aliquot and store at -80°C for 12 months.
Storage buffer	Supplied as lyophilized form in 20mM Tris, 500mM NaCl, pH8.0, containing 1mM EDTA, 1mM DTT, 0.01% sarcosyl, 5% trehalose, and preservative.
Reconstitution	Reconstitute in ddH ₂ O.

GENE INFORMATION

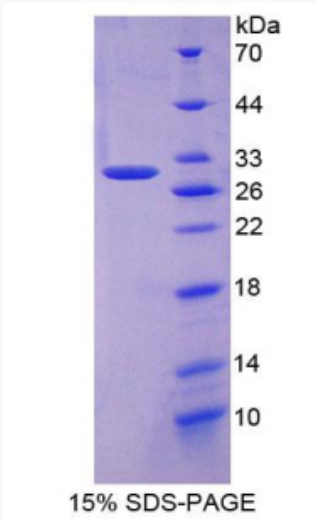
Gene Name	App amyloid beta (A4) precursor protein [Mus musculus (house mouse)]
Official Symbol	App
Synonyms	App; amyloid beta (A4) precursor protein; Ag; Abpp; Adap; Cvap; Abeta; betaApp; E030013M08Rik; amyloid beta A4 protein; alzheimer disease amyloid A4 protein homolog; amyloid precursor protein; amyloidogenic glycoprotein; appican; beta-amyloid precursor protein; protease nexin II
Gene ID	11820
mRNA Refseq	NM_001198823.1
Protein Refseq	NP_001185752.1
UniProt ID	P12023

 Tel: 1-631-559-9269 1-516-512-3133

 Email: info@creative-biomart.com  Fax: 1-631-938-8127

 45-1 Ramsey Road, Shirley, NY 11967, USA

SDS-PAGE



 Tel: 1-631-559-9269 1-516-512-3133

 Email: info@creative-biomart.com  Fax: 1-631-938-8127

 45-1 Ramsey Road, Shirley, NY 11967, USA