

Recombinant Mouse Aqp2 Full Length Transmembrane protein, His-tagged

Cat. No. Aqp2-1953M **Lot. No.** (See product label)

SPECIFICATION

Product Overview	Recombinant Mouse Aqp2 protein(P56402)(1-271aa), fused with N-terminal His tag, was expressed in in vitro E. coli expression system.
Species	Mouse
Source	E.coli
ProteinLength	1-271aa
Form	If the delivery form is liquid, the default storage buffer is Tris/PBS-based buffer, 5%-50% glycerol. If the delivery form is lyophilized powder, the buffer before lyophilization is Tris/PBS-based buffer, 6% Trehalose, pH 8.0.
Molecular Mass	30.5 kDa
AA Sequence	MWELRSIAFSRAVLAEFLATLLFVFFGLGSALQWASSPPSVLQIAVAFGLGIGTLVQA LGHVSGAHINPAVTVACLVGCHVSFLRAAFYVAAQLLGAVAGAILHEITPVEIRGDL AVNALHNNATAGQAVTVELFLTMQLVLCIFASTDERRSDNLGSPALSIGFSVTLGHLL GIYFTGCSMNPARS LAPAVVTGKFDDHWVFWIGPLVGAVIGSLLYNYLLFPSTKSLQ ERLAVLKGLEPDTDWEEREVRRRQSVLHSPQSLPRGSKA
Purity	Greater than 85% as determined by SDS-PAGE.

 Tel: 1-631-559-9269 1-516-512-3133

 Email: info@creative-biomart.com  Fax: 1-631-938-8127

 45-1 Ramsey Road, Shirley, NY 11967, USA

Storage Store at -20°C/-80°C upon receipt, aliquoting is necessary for multiple use. Avoid repeated freeze-thaw cycles.

Reconstitution Please reconstitute protein in deionized sterile water to a concentration of 0.1-1.0 mg/mL. We recommend to add 5-50% of glycerol (final concentration) and aliquot for long-term storage at -20°C/-80°C.

GENE INFORMATION

Gene Name [Aqp2 aquaporin 2 \[Mus musculus \]](#)

Official Symbol [Aqp2](#)

Synonyms AQP2; aquaporin 2; aquaporin-2; AQP-2; aquaporin-CD; ADH water channel; collecting duct water channel protein; water channel protein for renal collecting duct; cph; jpk; AQP-CD; WCH-CD;

Gene ID [11827](#)

mRNA Refseq [NM_009699](#)

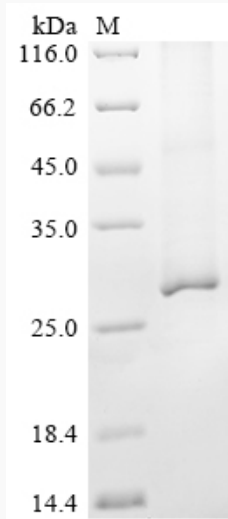
Protein Refseq [NP_033829](#)

 Tel: 1-631-559-9269 1-516-512-3133

 Email: info@creative-biomart.com  Fax: 1-631-938-8127

 45-1 Ramsey Road, Shirley, NY 11967, USA

SDS-PAGE



 Tel: 1-631-559-9269 1-516-512-3133

 Email: info@creative-biomart.com  Fax: 1-631-938-8127

 45-1 Ramsey Road, Shirley, NY 11967, USA