

Recombinant Mouse Aqp4 Full Length Transmembrane protein, His-tagged

Cat. No. Aqp4-1049M **Lot. No.** (See product label)

SPECIFICATION

Product Overview

Recombinant Mouse Aqp4 protein(P55088)(1-323aa), fused with N-terminal His tag, was expressed in in vitro E. coli expression system.

Species

Mouse

Source

E.coli

ProteinLength

1-323aa

Form

If the delivery form is liquid, the default storage buffer is Tris/PBS-based buffer, 5%-50% glycerol.
If the delivery form is lyophilized powder, the buffer before lyophilization is Tris/PBS-based buffer, 6% Trehalose, pH 8.0.

Molecular Mass

40.5 kDa

AA Sequence

MSDGAAARRWGKCGHSCSRESIMVAFKGVWTQAFWKAVSAEFLATLIFVLLGVGS
TINWGGSENPLPVDMLISLCFGLSIATMVQCFGHISGGHINPAVTVAMVCTRKISIAK
SVFYIIAQCLGAIIGAGILYLVTPPSVVGGLGVTTVHGNLTAGHGLLVELIITFQLVFTIF
ASCDKRTDVTGSIALAIGFSVAIGHLFAINYTGASMNPARSFGPAVIMGNWANHWIY
WVGPIMGAVLAGALYEYVFCPDVELKRRLKEAFSkaaQQTkgsYMEVEDNRSQVE
TEDLILKPGVVHVIDIDRGEEKKGKDSSGEVLSSV

Purity

Greater than 85% as determined by SDS-PAGE.

 Tel: 1-631-559-9269 1-516-512-3133

 Email: info@creative-biomart.com  Fax: 1-631-938-8127

 45-1 Ramsey Road, Shirley, NY 11967, USA

Storage Store at -20°C/-80°C upon receipt, aliquoting is necessary for multiple use. Avoid repeated freeze-thaw cycles.

Reconstitution Please reconstitute protein in deionized sterile water to a concentration of 0.1-1.0 mg/mL. We recommend to add 5-50% of glycerol (final concentration) and aliquot for long-term storage at -20°C/-80°C.

GENE INFORMATION

Gene Name [Aqp4 aquaporin 4 \[Mus musculus \]](#)

Official Symbol [Aqp4](#)

Synonyms AQP4; aquaporin 4; aquaporin-4; AQP-4; mercurial-insensitive water channel; WCH4;

Gene ID [11829](#)

mRNA Refseq [NM_009700](#)

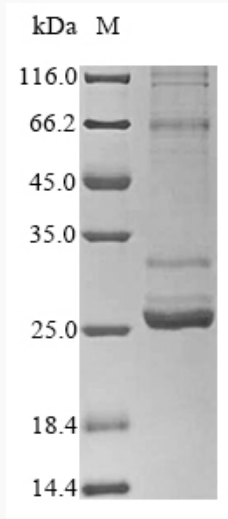
Protein Refseq [NP_033830](#)

 Tel: 1-631-559-9269 1-516-512-3133

 Email: info@creative-biomart.com  Fax: 1-631-938-8127

 45-1 Ramsey Road, Shirley, NY 11967, USA

SDS-PAGE



 Tel: 1-631-559-9269 1-516-512-3133

 Email: info@creative-biomart.com  Fax: 1-631-938-8127

 45-1 Ramsey Road, Shirley, NY 11967, USA