

Recombinant Rat Arc Protein, His-tagged

Cat. No. Arc-241R **Lot. No.** (See product label)

SPECIFICATION

Product Overview	Recombinant Rat Arc Protein (Gln204-Glu396) with N-His tag was expressed in E. coli.
Species	Rat
Source	E.coli
ProteinLength	Gln204-Glu396
Description	Enables mRNA binding activity. Involved in several processes, including learning or memory; positive regulation of AMPA receptor activity; and regulation of synaptic plasticity. Located in actin cytoskeleton and extracellular vesicle. Is active in glutamatergic synapse; postsynaptic density membrane; and postsynaptic endosome. Biomarker of middle cerebral artery infarction and visual epilepsy. Orthologous to human ARC (activity regulated cytoskeleton associated protein).
Form	Freeze-dried powder
Molecular Mass	Predicted Molecular Mass: 26.3 kDa Accurate Molecular Mass: 31 kDa
Purity	> 90%
Applications	Positive Control; Immunogen; SDS-PAGE; WB.

 Tel: 1-631-559-9269 1-516-512-3133

 Email: info@creative-biomart.com  Fax: 1-631-938-8127

 45-1 Ramsey Road, Shirley, NY 11967, USA

Stability	The thermal stability is described by the loss rate. The loss rate was determined by accelerated thermal degradation test, that is, incubate the protein at 37 centigrade for 48h, and no obvious degradation and precipitation were observed. The loss rate is less than 5% within the expiration date under appropriate storage condition.
Storage	Avoid repeated freeze/thaw cycles. Store at 2-8 centigrade for one month. Aliquot and store at -80 centigrade for 12 months.
Storage Buffer	20mM Tris, 150mM NaCl, pH8.0, containing 1mM EDTA, 1mM DTT, 0.01% SKL, 5% Trehalose and Proclin300.
Reconstitution	Reconstitute in sterile water to a concentration of 0.1-1.0 mg/mL. Do not vortex.

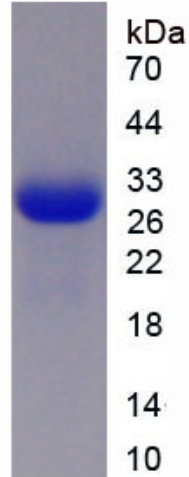
GENE INFORMATION

Gene Name	Arc activity-regulated cytoskeleton-associated protein [Rattus norvegicus (Norway rat)]
Official Symbol	Arc
Synonyms	ARC; activity-regulated cytoskeleton-associated protein; arg3.1; ARC/ARG3.1; activity-regulated gene 3.1 protein; activity regulated cytoskeletal-associated protein; rg3.1
Gene ID	54323
mRNA Refseq	NM_019361
Protein Refseq	NP_062234
UniProt ID	Q63053

 Tel: 1-631-559-9269 1-516-512-3133

 Email: info@creative-biomart.com  Fax: 1-631-938-8127

 45-1 Ramsey Road, Shirley, NY 11967, USA



Tel: 1-631-559-9269 1-516-512-3133

Email: info@creative-biomart.com Fax: 1-631-938-8127

45-1 Ramsey Road, Shirley, NY 11967, USA