

Recombinant Mouse Arg1 protein, His-tagged

Cat. No. Arg1-1523M **Lot. No.** (See product label)

SPECIFICATION

Product Overview	Recombinant Mouse Arg1 aa. (Met1~Lys323) fused with N-terminal His tag was produced in E. coli cells.
Species	Mouse
Source	E.coli
ProteinLength	Met1~Lys323
Form	Freeze-dried powder
Molecular Mass	37kDa as determined by SDS-PAGE reducing conditions.
Endotoxin	<1.0EU per 1g (determined by the LAL method).
Purity	>95%
Characteristic	The isoelectric point is 6.6.
Applications	SDS-PAGE; WB; ELISA; IP; CoIP; Purification; Amine Reactive Labeling.
Stability	The thermal stability is described by the loss rate. The loss rate was determined by accelerated thermal degradation test, that is, incubate the protein at 37°C for 48h, and no obvious degradation and precipitation were observed. The loss rate is less

 Tel: 1-631-559-9269 1-516-512-3133

 Email: info@creative-biomart.com  Fax: 1-631-938-8127

 45-1 Ramsey Road, Shirley, NY 11967, USA

than 5% within the expiration date under appropriate storage condition.

Storage

Avoid repeated freeze/thaw cycles. Store at 2-8°C for one month. Aliquot and store at -80°C for 12 months.

Storage buffer

20mM Tris, 150mM NaCl, pH8.0, containing 1mM EDTA, 1mM DTT, 0.01% sarcosyl, 5%Trehalose and Proclin300.

Reconstitution

Reconstitute in 20mM Tris, 150mM NaCl (pH8.0) to a concentration of 0.1-1.0mg/mL. Do not vortex.

GENE INFORMATION

Gene Name

[Arg1 arginase, liver \[Mus musculus \(house mouse\) \]](#)

Official Symbol

[Arg1](#)

Synonyms

AI; PGIF; Arg-1; AI256583; arginase 1, liver; arginase I; liver-type arginase; type I arginase; arginase-1

Gene ID

[11846](#)

mRNA Refseq

[NM_007482.3](#)

Protein Refseq

[NP_031508.1](#)

UniProt ID

[Q61176](#)

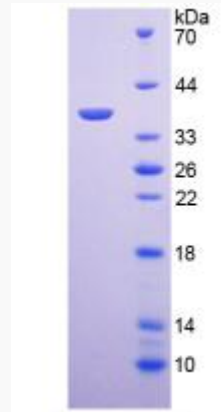
 Tel: 1-631-559-9269 1-516-512-3133

 Email: info@creative-biomart.com  Fax: 1-631-938-8127

 45-1 Ramsey Road, Shirley, NY 11967, USA



SDS-PAGE



Tel: 1-631-559-9269 1-516-512-3133

Email: info@creative-biomart.com Fax: 1-631-938-8127

45-1 Ramsey Road, Shirley, NY 11967, USA