

## Recombinant Rat Arhgef7 protein, His & T7-tagged

Cat. No. Arhgef7-1731R Lot. No. (See product label)

### SPECIFICATION

<b>Product Overview</b>	Recombinant Rat Arhgef7 aa. (Met1~Ala188 (Accession # O55043)) fused with N-terminal His & T7 tag was produced in E. coli cells.
<b>Species</b>	Rat
<b>Source</b>	E.coli
<b>ProteinLength</b>	Met1~Ala188
<b>Description</b>	Rac/Cdc42-specific guanine nucleotide exchange factor; mediates bFGF-induced neurite outgrowth.
<b>Form</b>	Freeze-dried powder
<b>Molecular Mass</b>	Predicted Molecular Mass: 25.0kDa
<b>Endotoxin</b>	<1.0EU per 1ug (determined by the LAL method)
<b>Purity</b>	>95%
<b>Applications</b>	SDS-PAGE; WB; ELISA; IP.
<b>Stability</b>	The thermal stability is described by the loss rate. The loss rate was determined by accelerated thermal degradation test, that is, incubate the protein at 37°C for 48h, and no obvious degradation and precipitation were observed. The loss rate is less

 Tel: 1-631-559-9269 1-516-512-3133

 Email: [info@creative-biomart.com](mailto:info@creative-biomart.com)  Fax: 1-631-938-8127

 45-1 Ramsey Road, Shirley, NY 11967, USA

than 5% within the expiration date under appropriate storage condition.

**Storage**

Avoid repeated freeze/thaw cycles. Store at 2-8°C for one month. Aliquot and store at -80°C for 12 months.

**Storage buffer**

Supplied as lyophilized form in 20mM Tris, 150mM NaCl, pH8.0, containing 1mM EDTA, 1mM DTT, 0.01% sarcosyl, 5% trehalose, and preservative.

**Reconstitution**

Reconstitute in sterile ddH<sub>2</sub>O.

**Isoelectric Point**

5.5

## GENE INFORMATION

**Gene Name**

*Arhgef7* Rho guanine nucleotide exchange factor 7 [ *Rattus norvegicus* (Norway rat) ]

**Official Symbol**

*Arhgef7*

**Synonyms**

*Arhgef7*; Rho guanine nucleotide exchange factor 7; P85spr; Pak3bp; rho guanine nucleotide exchange factor 7; PAK-interacting exchange factor beta; Rho guanine nucleotide exchange factor (GEF) 7; beta-Pix

**Gene ID**

114559

**mRNA Refseq**

NM\_001113522.1

**Protein Refseq**

NP\_001106994.1

**UniProt ID**

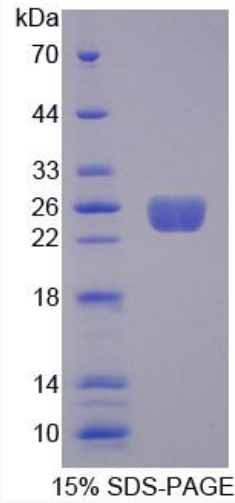
O55043

 Tel: 1-631-559-9269 1-516-512-3133

 Email: [info@creative-biomart.com](mailto:info@creative-biomart.com)  Fax: 1-631-938-8127

 45-1 Ramsey Road, Shirley, NY 11967, USA

**SDS-PAGE**



 Tel: 1-631-559-9269 1-516-512-3133

 Email: [info@creative-biomart.com](mailto:info@creative-biomart.com)  Fax: 1-631-938-8127

 45-1 Ramsey Road, Shirley, NY 11967, USA