

Recombinant Mouse Atg10 Protein, His-tagged

Cat. No. Atg10-257M **Lot. No.** (See product label)

SPECIFICATION

Product Overview	Recombinant Mouse Atg10 Protein (Met1-Glu211) with N-His tag was expressed in E. coli.
Species	Mouse
Source	E.coli
ProteinLength	Met1-Glu211
Description	Enables Atg12 conjugating enzyme activity. Acts upstream of or within positive regulation of protein modification process and protein lipidation. Predicted to be located in cytosol. Orthologous to human ATG10 (autophagy related 10).
Form	Freeze-dried powder
Molecular Mass	Predicted Molecular Mass: 28.3 kDa Accurate Molecular Mass: 28 kDa
Purity	> 90%
Applications	Positive Control; Immunogen; SDS-PAGE; WB.
Stability	The thermal stability is described by the loss rate. The loss rate was determined by accelerated thermal degradation test, that is, incubate the protein at 37 centigrade for 48h, and no obvious degradation and precipitation were observed. The loss rate is

 Tel: 1-631-559-9269 1-516-512-3133

 Email: info@creative-biomart.com  Fax: 1-631-938-8127

 45-1 Ramsey Road, Shirley, NY 11967, USA

less than 5% within the expiration date under appropriate storage condition.

Storage

Avoid repeated freeze/thaw cycles. Store at 2-8 centigrade for one month. Aliquot and store at -80 centigrade for 12 months.

Storage Buffer

20mM Tris, 150mM NaCl, pH8.0, containing 1mM EDTA, 1mM DTT, 0.01% SKL, 5% Trehalose and Proclin300.

Reconstitution

Reconstitute in sterile water to a concentration of 0.1-1.0 mg/mL. Do not vortex.

GENE INFORMATION

Gene Name

[Atg10 autophagy-related 10 \(yeast\) \[Mus musculus \(house mouse\) \]](#)

Official Symbol

[Atg10](#)

Synonyms

ATG10; autophagy-related 10 (yeast); ubiquitin-like-conjugating enzyme ATG10; mAPG10; autophagy-related protein 10; APG10; Agp10; Apg10l; Apg10p; Atg10l; AI852123; 5330424L23Rik; 5430428K15Rik

Gene ID

[66795](#)

mRNA Refseq

[NM_025770](#)

Protein Refseq

[NP_080046](#)

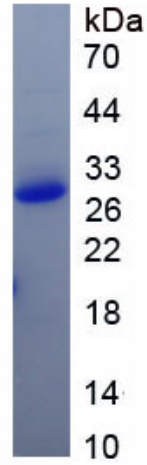
UniProt ID

[Q8R1P4](#)

 Tel: 1-631-559-9269 1-516-512-3133

 Email: info@creative-biomart.com  Fax: 1-631-938-8127

 45-1 Ramsey Road, Shirley, NY 11967, USA



 Tel: 1-631-559-9269 1-516-512-3133

 Email: info@creative-biomart.com  Fax: 1-631-938-8127

 45-1 Ramsey Road, Shirley, NY 11967, USA