

Recombinant Rat Atg10 Protein, His-tagged

Cat. No. Atg10-258R **Lot. No.** (See product label)

SPECIFICATION

Product Overview	Recombinant Rat Atg10 Protein (Met1-Glu214) with N-His tag was expressed in E. coli.
Species	Rat
Source	E.coli
ProteinLength	Met1-Glu214
Description	Predicted to enable Atg12 conjugating enzyme activity. Predicted to be involved in ER overload response; cellular protein modification process; and macroautophagy. Predicted to act upstream of or within positive regulation of protein modification process. Orthologous to human ATG10 (autophagy related 10).
Form	Freeze-dried powder
Molecular Mass	Predicted Molecular Mass: 28.1 kDa Accurate Molecular Mass: 30 kDa
Purity	> 95%
Applications	Positive Control; Immunogen; SDS-PAGE; WB.
Stability	The thermal stability is described by the loss rate. The loss rate was determined by accelerated thermal degradation test, that is, incubate the protein at 37 centigrade for

 Tel: 1-631-559-9269 1-516-512-3133

 Email: info@creative-biomart.com  Fax: 1-631-938-8127

 45-1 Ramsey Road, Shirley, NY 11967, USA

48h, and no obvious degradation and precipitation were observed. The loss rate is less than 5% within the expiration date under appropriate storage condition.

Storage

Avoid repeated freeze/thaw cycles. Store at 2-8 centigrade for one month. Aliquot and store at -80 centigrade for 12 months.

Storage Buffer

20mM Tris, 150mM NaCl, pH8.0, containing 1mM EDTA, 1mM DTT, 0.01% SKL, 5% Trehalose and Proclin300.

Reconstitution

Reconstitute in sterile water to a concentration of 0.1-1.0 mg/mL. Do not vortex.

GENE INFORMATION

Gene Name

[Atg10 autophagy related 10 homolog \(S. cerevisiae\) \[Rattus norvegicus \(Norway rat\) \]](#)

Official Symbol

[Atg10](#)

Synonyms

ATG10; autophagy related 10 homolog (S. cerevisiae); autophagy-related protein 10; autophagy-related 10

Gene ID

[688555](#)

mRNA Refseq

[NM_001109505](#)

Protein Refseq

[NP_001102975](#)

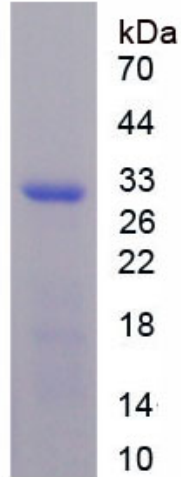
UniProt ID

[D4A9K6](#)

 Tel: 1-631-559-9269 1-516-512-3133

 Email: info@creative-biomart.com  Fax: 1-631-938-8127

 45-1 Ramsey Road, Shirley, NY 11967, USA



Tel: 1-631-559-9269 1-516-512-3133

Email: info@creative-biomart.com Fax: 1-631-938-8127

45-1 Ramsey Road, Shirley, NY 11967, USA