

Recombinant Mouse Atg7 Protein, His-tagged

Cat. No. Atg7-1525M **Lot. No.** (See product label)

SPECIFICATION

Product Overview	Recombinant Mouse Atg7 Protein (Arg477~Val698) with N-terminal His-tag was expressed in E.coli.
Species	Mouse
Source	E.coli
ProteinLength	477-698 a.a.
Description	This gene encodes an E1-like activating enzyme that is essential for autophagy and cytoplasmic to vacuole transport. The encoded protein is also thought to modulate p53-dependent cell cycle pathways during prolonged metabolic stress. It has been associated with multiple functions, including axon membrane trafficking, axonal homeostasis, mitophagy, adipose differentiation, and hematopoietic stem cell maintenance.
Form	Freeze-dried powder
Molecular Mass	27.8 kDa
Purity	> 95%
Applications	Positive Control; Immunogen; SDS-PAGE; WB
Stability	The thermal stability is described by the loss rate. The loss rate was determined by

 Tel: 1-631-559-9269 1-516-512-3133

 Email: info@creative-biomart.com  Fax: 1-631-938-8127

 45-1 Ramsey Road, Shirley, NY 11967, USA

accelerated thermal degradation test, that is, incubate the protein at 37 centigrade for 48h, and no obvious degradation and precipitation were observed. The loss rate is less than 5% within the expiration date under appropriate storage condition.

Storage

Avoid repeated freeze/thaw cycles.
Store at 2-8 centigrade for one month.
Aliquot and store at -80 centigrade for 12 months.

Concentration

200 µg/mL

Storage Buffer

20mM Tris, 150mM NaCl, pH8.0, containing 0.01% SKL, 5% Trehalose.

Reconstitution

Reconstitute in 20mM Tris, 150mM NaCl (pH8.0) to a concentration of 0.1-1.0 mg/mL.
Do not vortex

GENE INFORMATION

Gene Name

[Atg7 autophagy related 7 \[Mus musculus \(house mouse\) \]](#)

Official Symbol

[Atg7](#)

Synonyms

Atg7; autophagy related 7; Agp7; Apg7l; Atg7l; Gm21553; 1810013K23Rik; ubiquitin-like modifier-activating enzyme ATG7; ATG12-activating enzyme E1 ATG7; autophagy-related protein 7; ubiquitin-activating enzyme E1-like protein

Gene ID

[74244](#)

mRNA Refseq

[NM_028835](#)

Protein Refseq

[NP_083111](#)

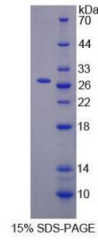
 Tel: 1-631-559-9269 1-516-512-3133

 Email: info@creative-biomart.com  Fax: 1-631-938-8127

 45-1 Ramsey Road, Shirley, NY 11967, USA

UniProt ID

Q9D906



 Tel: 1-631-559-9269 1-516-512-3133

 Email: info@creative-biomart.com  Fax: 1-631-938-8127

 45-1 Ramsey Road, Shirley, NY 11967, USA