

Recombinant Mouse Atp1a1 protein, His-tagged

Cat. No. Atp1a1-4353M Lot. No. (See product label)

SPECIFICATION

Product Overview	Recombinant Mouse Atp1a1 protein(Q8VDN2)(341-775aa), fused with N-terminal His tag, was expressed in E.coli.
Species	Mouse
Source	E.coli
ProteinLength	341-775aa
Form	If the delivery form is liquid, the default storage buffer is Tris/PBS-based buffer, 5%-50% glycerol. If the delivery form is lyophilized powder, the buffer before lyophilization is Tris/PBS-based buffer, 6% Trehalose, pH 8.0.
Molecular Mass	53.3 kDa
Purity	Greater than 85% as determined by SDS-PAGE.
Storage	Store at -20°C/-80°C upon receipt, aliquoting is necessary for mutiple use. Avoid repeated freeze-thaw cycles.
Reconstitution	We recommend that this vial be briefly centrifuged prior to opening to bring the contents to the bottom. Please reconstitute protein in deionized sterile water to a concentration of 0.1-1.0 mg/mL. We recommend to add 5-50% of glycerol (final concentration) and aliquot for long-term storage at -20°C/-80°C.

 Tel: 1-631-559-9269 1-516-512-3133

 Email: info@creative-biomart.com  Fax: 1-631-938-8127

 45-1 Ramsey Road, Shirley, NY 11967, USA

AA Sequence

TVCLTLTAKRMARKNCLVKNLEAVETLGSTSTICSDKTGTLTQNRMTVAHMWFDNQI
 HEADTTENQSGV SFDKTSATWFALSRIAGLCNRAVFQANQENLPILKRAVAGDASES
 ALLKCIEVCCGSVMEMREKYSKIVEIPFNSTNKYQLSIHKPNASEPKHLLVMKGAPE
 RILDRCSSILLHGKEQPLDEELKDAFQNAYLELGGGLGERVLGFCHLLLPDEQFPEGF
 QFDTDDVNFVVDNLFCVGLISMIDPPRAAVPDAVGKCRSAGIKVIMVTGDHPITAKAI
 AKGVGIISEGNETVEDIAARLNIPVNQVNPRDAKACVVHGSCLKDMTSEELDDILRYH
 TEIVFARTSPQQKLIIVEGCQRQGAIVAVTGDGVNDSPALKKADIGVAMGIVGSDVSK
 QAADMILLDDNFASIVTGVEEGRLIFDNLKKS

GENE INFORMATION

Gene Name [Atp1a1 ATPase, Na⁺/K⁺ transporting, alpha 1 polypeptide \[Mus musculus \]](#)

Official Symbol [Atp1a1](#)

Synonyms ATP1A1; ATPase, Na⁺/K⁺ transporting, alpha 1 polypeptide; sodium/potassium-transporting ATPase subunit alpha-1; sodium pump subunit alpha-1; Na(+)/K(+) ATPase alpha-1 subunit; Atpa-1; BC010319; MGC38419;

Gene ID [11928](#)

mRNA Refseq [NM_144900](#)

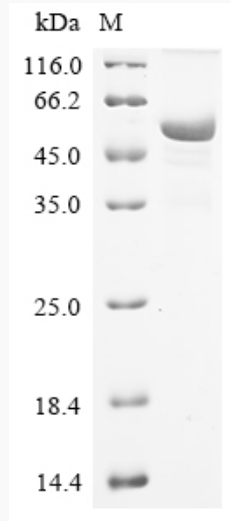
Protein Refseq [NP_659149](#)

 Tel: 1-631-559-9269 1-516-512-3133

 Email: info@creative-biomart.com  Fax: 1-631-938-8127

 45-1 Ramsey Road, Shirley, NY 11967, USA

SDS-PAGE



 Tel: 1-631-559-9269 1-516-512-3133

 Email: info@creative-biomart.com  Fax: 1-631-938-8127

 45-1 Ramsey Road, Shirley, NY 11967, USA