

# Recombinant Mouse Atp1b1 Full Length Transmembrane protein, His-tagged

**Cat. No.** Atp1b1-1309M    **Lot. No.** (See product label)

## SPECIFICATION

<b>Product Overview</b>	Recombinant Mouse Atp1b1 protein(P14094)(1-304aa), fused with N-terminal His tag, was expressed in in vitro E. coli expression system.
<b>Species</b>	Mouse
<b>Source</b>	E.coli
<b>ProteinLength</b>	1-304aa
<b>Form</b>	<p>If the delivery form is liquid, the default storage buffer is Tris/PBS-based buffer, 5%-50% glycerol.</p> <p>If the delivery form is lyophilized powder, the buffer before lyophilization is Tris/PBS-based buffer, 6% Trehalose, pH 8.0.</p>
<b>AA Sequence</b>	<p>MARGKAKEEGSWKKFIWNSEKKEFLGRTGGSWFKILLFYVIFYGCLAGIFIGTIQVML            LTISELKPTYQDRVAPPGLTQIPQIQKTEISFRPNPKSYEAYVLNIIRFLEKYKDSAQK            DDMIFEDCGNVPSEPKERGDINHERGERKVCRFKLDWLGNCGLNDDSYGYREGK            PCIIKLNRLVGFKPKPPKNESLETYPLMMKYNPNVLPVQCTGKRDEDKDKVGNIEYF            GMGGYYGFPLQYYPYGGKLLQPKYLQPLLAVQFTNLTVDTVEIRVECKAYGENIGYSE            KDRFQGRFDVKIEIKS-</p>
<b>Purity</b>	Greater than 85% as determined by SDS-PAGE.
<b>Storage</b>	Store at -20°C/-80°C upon receipt, aliquoting is necessary for mutiple use. Avoid

 Tel: 1-631-559-9269    1-516-512-3133

 Email: [info@creative-biomart.com](mailto:info@creative-biomart.com)     Fax: 1-631-938-8127

 45-1 Ramsey Road, Shirley, NY 11967, USA

repeated freeze-thaw cycles.

**Reconstitution**

Please reconstitute protein in deionized sterile water to a concentration of 0.1-1.0 mg/mL. We recommend to add 5-50% of glycerol (final concentration) and aliquot for long-term storage at -20°C/-80°C.

**GENE INFORMATION****Gene Name**

[Atp1b1 ATPase, Na+/K+ transporting, beta 1 polypeptide \[ Mus musculus \]](#)

**Official Symbol**

[Atp1b1](#)

**Synonyms**

ATP1B1; ATPase, Na+/K+ transporting, beta 1 polypeptide; sodium/potassium-transporting ATPase subunit beta-1; sodium/potassium ATPase beta subunit; sodium/potassium-dependent ATPase subunit beta-1; Atpb; Atpb-1;

**Gene ID**

[11931](#)

**mRNA Refseq**

[NM\\_009721](#)

**Protein Refseq**

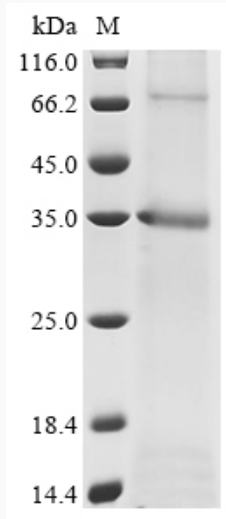
[NP\\_033851](#)

 Tel: 1-631-559-9269 1-516-512-3133

 Email: [info@creative-biomart.com](mailto:info@creative-biomart.com)  Fax: 1-631-938-8127

 45-1 Ramsey Road, Shirley, NY 11967, USA

**SDS-PAGE**



 Tel: 1-631-559-9269 1-516-512-3133

 Email: [info@creative-biomart.com](mailto:info@creative-biomart.com)  Fax: 1-631-938-8127

 45-1 Ramsey Road, Shirley, NY 11967, USA