

## Recombinant Rat Atp1b3 protein, His & T7-tagged

**Cat. No.** Atp1b3-709R    **Lot. No.** (See product label)

### SPECIFICATION

<b>Product Overview</b>	Recombinant Rat Atp1b3 aa. (Asn66~Phe273 (Accession # Q63377)) fused with N-terminal His & T7 tag was produced in E. coli cells.
<b>Species</b>	Rat
<b>Source</b>	E.coli
<b>ProteinLength</b>	Asn66~Phe273
<b>Description</b>	Plays a role in Na <sup>+</sup> and K <sup>+</sup> transport.
<b>Form</b>	Freeze-dried powder
<b>Molecular Mass</b>	Predicted Molecular Mass: 27.4kDa
<b>Endotoxin</b>	<1.0EU per 1g (determined by the LAL method)
<b>Purity</b>	>95%
<b>Characteristic</b>	The isoelectric point is 6.8.
<b>Applications</b>	SDS-PAGE; WB; ELISA; IP
<b>Stability</b>	The thermal stability is described by the loss rate. The loss rate was determined by accelerated thermal degradation test, that is, incubate the protein at 37°C for 48h,

 Tel: 1-631-559-9269    1-516-512-3133

 Email: [info@creative-biomart.com](mailto:info@creative-biomart.com)     Fax: 1-631-938-8127

 45-1 Ramsey Road, Shirley, NY 11967, USA

and no obvious degradation and precipitation were observed. The loss rate is less than 5% within the expiration date under appropriate storage condition.

**Storage**

Avoid repeated freeze/thaw cycles. Store at 2-8°C for one month. Aliquot and store at -80°C for 12 months.

**Storage buffer**

Supplied as lyophilized form in PBS, pH7.4, containing 5% trehalose, 0.01% sarcosyl.

**Reconstitution**

Reconstitute in sterile PBS, pH7.2-pH7.4.

## GENE INFORMATION

**Gene Name**

[Atp1b3 ATPase Na<sup>+</sup>/K<sup>+</sup> transporting subunit beta 3 \[ Rattus norvegicus \(Norway rat\) \]](#)

**Official Symbol**

[Atp1b3](#)

**Synonyms**

Atp1b3; ATPase Na<sup>+</sup>/K<sup>+</sup> transporting subunit beta 3; NKAB3S; sodium/potassium-transporting ATPase subunit beta-3; ATPB-3; ATPase, Na<sup>+</sup>/K<sup>+</sup> transporting, beta 3 polypeptide; ATPase, Na<sup>+</sup>K<sup>+</sup> transporting, beta polypeptide 3; Na<sup>+</sup>/K<sup>+</sup> -ATPase beta 3 subunit; sodium/potassium-dependent ATPase subunit beta-3

**Gene ID**

[25390](#)

**mRNA Refseq**

[NM\\_012913.1](#)

**Protein Refseq**

[NP\\_037045.1](#)

**UniProt ID**

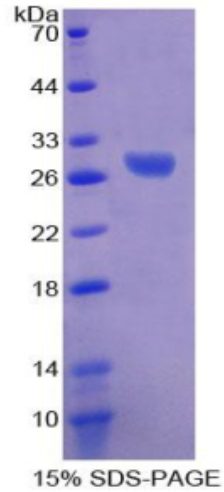
[Q63377](#)

 Tel: 1-631-559-9269 1-516-512-3133

 Email: [info@creative-biomart.com](mailto:info@creative-biomart.com)  Fax: 1-631-938-8127

 45-1 Ramsey Road, Shirley, NY 11967, USA

**SDS-PAGE**



 Tel: 1-631-559-9269 1-516-512-3133

 Email: [info@creative-biomart.com](mailto:info@creative-biomart.com)  Fax: 1-631-938-8127

 45-1 Ramsey Road, Shirley, NY 11967, USA