

Recombinant Rat Atp5j protein, His & T7-tagged

Cat. No. Atp5j-1532R **Lot. No.** (See product label)

SPECIFICATION

Product Overview	Recombinant Rat Atp5j aa. (Met1~Ser108 (Accession # P21571)) fused with N-terminal His & T7 tag was produced in E. coli cells.
Species	Rat
Source	E.coli
ProteinLength	Met1~Ser108
Description	Coupling factor 6 of the mitochondrial ATP synthase complex.
Form	Freeze-dried powder
Molecular Mass	Predicted Molecular Mass: 16.2kDa
Endotoxin	<1.0EU per 1ug (determined by the LAL method)
Purity	>95%
Applications	SDS-PAGE; WB; ELISA; IP.
Stability	The thermal stability is described by the loss rate. The loss rate was determined by accelerated thermal degradation test, that is, incubate the protein at 37°C for 48h, and no obvious degradation and precipitation were observed. The loss rate is less than 5% within the expiration date under appropriate storage condition.

 Tel: 1-631-559-9269 1-516-512-3133

 Email: info@creative-biomart.com  Fax: 1-631-938-8127

 45-1 Ramsey Road, Shirley, NY 11967, USA

Storage	Avoid repeated freeze/thaw cycles. Store at 2-8°C for one month. Aliquot and store at -80°C for 12 months.
Storage buffer	Supplied as lyophilized form in PBS, pH7.4, containing 5% trehalose, 0.01% sarcosyl.
Reconstitution	Reconstitute in sterile PBS, pH7.2-pH7.4.
Isoelectric Point	9.4

GENE INFORMATION

Gene Name	<i>Atp5j</i> ATP synthase, H ⁺ transporting, mitochondrial Fo complex, subunit F6 [<i>Rattus norvegicus</i> (Norway rat)]
Official Symbol	<i>Atp5j</i>
Synonyms	<i>Atp5j</i> ; ATP synthase, H ⁺ transporting, mitochondrial Fo complex, subunit F6; ATP synthase-coupling factor 6, mitochondrial; ATP synthase, H ⁺ transporting, mitochondrial F0 complex, subunit F6; ATPase subunit F6; coupling factor 6
Gene ID	94271
mRNA Refseq	NM_053602.2
Protein Refseq	NP_446054.1
UniProt ID	P21571

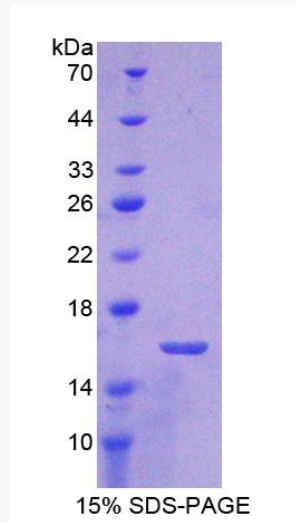
 Tel: 1-631-559-9269 1-516-512-3133

 Email: info@creative-biomart.com  Fax: 1-631-938-8127

 45-1 Ramsey Road, Shirley, NY 11967, USA



SDS-PAGE



Tel: 1-631-559-9269 1-516-512-3133

Email: info@creative-biomart.com Fax: 1-631-938-8127

45-1 Ramsey Road, Shirley, NY 11967, USA