

Recombinant Mouse Atxn3 protein, His-tagged

Cat. No. Atxn3-4626M **Lot. No.** (See product label)

SPECIFICATION

Product Overview	Recombinant Mouse Atxn3 protein(Q9CVD2)(1-355 aa), fused with C-terminal His tag, was expressed in E.coli.
Species	Mouse
Source	E.coli
ProteinLength	1-355 aa
Form	For liquid formulations, the standard storage buffer consists of a Tris or PBS based solution supplemented with 5-50% glycerol. When provided as lyophilized powder, the product undergoes freeze-drying from a Tris- or PBS-based formulation containing 6% trehalose, adjusted to pH 8.0 prior to the lyophilization process.
Molecular Mass	47.4 kDa
AASequence	MESIFHEKQEGSLCAQHCLNLLQGEYFSPVELSSIAHQLDEEERLRMAEGGVTSE DYRTFLQQPSGNMDDSGFFSIQVISNALKVWGLELILFNSPEYQRLRIDPINERSFICN YKEHWFTVRKLGKQWFNLNSLLTGPELISDTYLALFLAQLQQEGYSIFVVKGDLPDC EADQLLQMIKVQQMHRPKLIGEELAHLKEQSALKADLERVLEAADGSGIFDEDEDL QRALAIRQEIDMEDEEADLRRAIQLSMQGSRRSMCENSPQTSSPDLSSSEELRRRR EAYFEKQQQQQEVDRPGPLSYPRERPTTSSGGRRSDQGGDAVSEEDMLRAAVT MSLETAKDNLKAERKK
Purity	Greater than 95% as determined by SDS-PAGE.

 Tel: 1-631-559-9269 1-516-512-3133

 Email: info@creative-biomart.com  Fax: 1-631-938-8127

 45-1 Ramsey Road, Shirley, NY 11967, USA

Storage Store at -20°C/-80°C upon receipt, aliquoting is necessary for mutiple use. Avoid repeated freeze-thaw cycles.

Reconstitution Please reconstitute protein indeionized sterile water to a concentration of 0.1-1.0 mg/mL. Aliquot for long-term storage at -80°C.

GENE INFORMATION

Gene Name [Atxn3 ataxin 3 \[Mus musculus \]](#)

Official Symbol [Atxn3](#)

Synonyms ATXN3; ataxin 3; ataxin-3; machado-Joseph disease protein 1 homolog; Machado-Joseph disease (spinocerebellar ataxia 3, olivopontocerebellar ataxia 3, autosomal dominant, ataxin 3) homolog; Mjd; ATX3; MJD1; Sca3; AI463012; AI647473; 2210008M02Rik;

Gene ID [110616](#)

mRNA Refseq [NM_001167914](#)

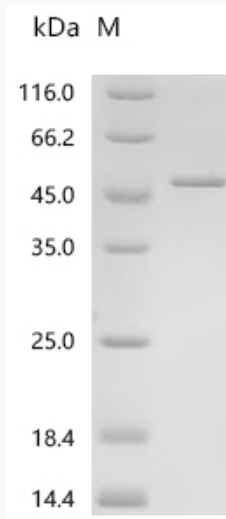
Protein Refseq [NP_001161386](#)

 Tel: 1-631-559-9269 1-516-512-3133

 Email: info@creative-biomart.com  Fax: 1-631-938-8127

 45-1 Ramsey Road, Shirley, NY 11967, USA

SDS-PAGE



 Tel: 1-631-559-9269 1-516-512-3133

 Email: info@creative-biomart.com  Fax: 1-631-938-8127

 45-1 Ramsey Road, Shirley, NY 11967, USA