

## Recombinant Mouse Atxn3 protein, His-tagged

**Cat. No.** Atxn3-4631M    **Lot. No.** (See product label)

### SPECIFICATION

<b>Product Overview</b>	Recombinant Mouse Atxn3 protein(Q9CVD2)(1-355 aa), fused with N-terminal His tag, was expressed in E.coli.
<b>Species</b>	Mouse
<b>Source</b>	E.coli
<b>ProteinLength</b>	1-355 aa
<b>Form</b>	For liquid formulations, the standard storage buffer consists of a Tris or PBS based solution supplemented with 5-50% glycerol. When provided as lyophilized powder, the product undergoes freeze-drying from a Tris- or PBS-based formulation containing 6% trehalose, adjusted to pH 8.0 prior to the lyophilization process.
<b>Molecular Mass</b>	44.6 kDa
<b>AASequence</b>	MESIFHEKQEGSLCAQHCLNLLQGEYFSPVELSSIAHQLDEEERLRMAEGGVTSE DYRTFLQQPSGNMDDSGFFSIQVISNALKVWGLELILFNSPEYQRLRIDPINERSFICN YKEHWFTVRKLGKQWFNLNSLLTGPELISDTYLALFLAQLQQEGYSIFVVKGDLPDC EADQLLQMIKVQQMHRPKLIGEELAHLKEQSALKADLERVLEAADGSGIFDEDEDL QRALAIRQEIDMEDEEADLRRAIQLSMQGSRRSMCENSPQTSSPDLSSSEELRRRR EAYFEKQQQQQEVDRPGPLSYPRERPTTSSGGRRSDQGGDAVSEEDMLRAAVT MSLETAKDNLKAERKK
<b>Purity</b>	Greater than 90% as determined by SDS-PAGE.

 Tel: 1-631-559-9269    1-516-512-3133

 Email: [info@creative-biomart.com](mailto:info@creative-biomart.com)     Fax: 1-631-938-8127

 45-1 Ramsey Road, Shirley, NY 11967, USA

**Storage** Store at -20°C/-80°C upon receipt, aliquoting is necessary for mutiple use. Avoid repeated freeze-thaw cycles.

**Reconstitution** Please reconstitute protein indeionized sterile water to a concentration of 0.1-1.0 mg/mL. Aliquot for long-term storage at -80°C.

## GENE INFORMATION

**Gene Name** [Atxn3 ataxin 3 \[ Mus musculus \]](#)

**Official Symbol** [Atxn3](#)

**Synonyms** ATXN3; ataxin 3; ataxin-3; machado-Joseph disease protein 1 homolog; Machado-Joseph disease (spinocerebellar ataxia 3, olivopontocerebellar ataxia 3, autosomal dominant, ataxin 3) homolog; Mjd; ATX3; MJD1; Sca3; AI463012; AI647473; 2210008M02Rik;

**Gene ID** [110616](#)

**mRNA Refseq** [NM\\_001167914](#)

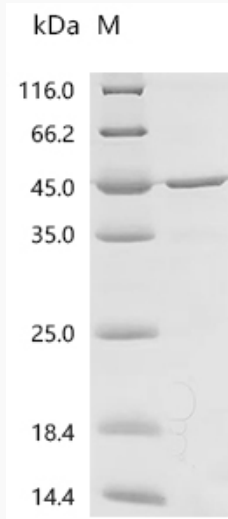
**Protein Refseq** [NP\\_001161386](#)

 Tel: 1-631-559-9269 1-516-512-3133

 Email: [info@creative-biomart.com](mailto:info@creative-biomart.com)  Fax: 1-631-938-8127

 45-1 Ramsey Road, Shirley, NY 11967, USA

**SDS-PAGE**



 Tel: 1-631-559-9269 1-516-512-3133

 Email: [info@creative-biomart.com](mailto:info@creative-biomart.com)  Fax: 1-631-938-8127

 45-1 Ramsey Road, Shirley, NY 11967, USA