

Recombinant Rat Avpi1 protein, His & T7-tagged

Cat. No. Avpi1-8221R **Lot. No.** (See product label)

SPECIFICATION

Product Overview	Recombinant Rat Avpi1 aa. (Leu13~His148 (Accession # F1LRX4)) fused with N-terminal His & T7 tag was produced in E. coli cells.
Species	Rat
Source	E.coli
ProteinLength	Leu13~His148
Description	Homologous to mouse arginine vasopressin-induced 1 gene.
Form	Freeze-dried powder
Molecular Mass	20&25kDa as determined by SDS-PAGE reducing conditions.
Endotoxin	<1.0EU per 1ug (determined by the LAL method)
Purity	>90%
Characteristic	The isoelectric point is 11.5.
Applications	SDS-PAGE; WB; ELISA; IP.
Stability	The thermal stability is described by the loss rate of the target protein. The loss rate was determined by accelerated thermal degradation test, that is, incubate the protein

 Tel: 1-631-559-9269 1-516-512-3133

 Email: info@creative-biomart.com  Fax: 1-631-938-8127

 45-1 Ramsey Road, Shirley, NY 11967, USA



at 37°C for 48h, and no obvious degradation and precipitation were observed. (Referring from China Biological Products Standard, which was calculated by the Arrhenius equation.) The loss of this protein is less than 5% within the expiration date under appropriate storage condition.

Storage Avoid repeated freeze/thaw cycles. Store at 2-8°C for one month. Aliquot and store at -80°C for 12 months.

Storage Buffer Supplied as lyophilized form in 20mM Tris, 150mM NaCl, pH8.0, containing 1mM EDTA, 1mM DTT, 0.01% sarcosyl, 5% trehalose, and preservative.

Reconstitution Reconstitute in sterile ddH₂O.

GENE INFORMATION

Gene Name [Avpi1 arginine vasopressin-induced 1 \[Rattus norvegicus \(Norway rat\) \]](#)

Official Symbol [Avpi1](#)

Synonyms Avpi1; arginine vasopressin-induced 1; esu; arginine vasopressin-induced protein 1; AVP-induced protein 1; Esau

Gene ID [171386](#)

mRNA Refseq [NM_134373.2](#)

Protein Refseq [NP_599200.2](#)

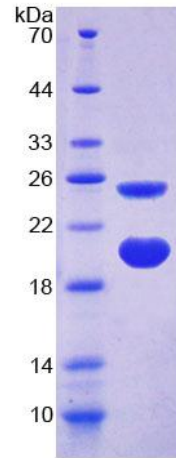
UniProt ID [F1LRX4](#)

Tel: 1-631-559-9269 1-516-512-3133

Email: info@creative-biomart.com Fax: 1-631-938-8127

45-1 Ramsey Road, Shirley, NY 11967, USA

SDS-PAGE



 Tel: 1-631-559-9269 1-516-512-3133

 Email: info@creative-biomart.com  Fax: 1-631-938-8127

 45-1 Ramsey Road, Shirley, NY 11967, USA