

Recombinant Mouse B2M Protein, Fc-tagged

Cat. No. B2M-01M Lot. No. (See product label)

SPECIFICATION

Product Overview	Recombinant Mouse B2M Protein, fused to Fc-tag, was expressed in E. coli.
Species	Mouse
Source	E.coli
Description	Predicted to enable MHC class II protein complex binding activity and protein homodimerization activity. Involved in learning or memory; modulation of age-related behavioral decline; and negative regulation of cell differentiation. Acts upstream of or within several processes, including antigen processing and presentation of exogenous protein antigen via MHC class Ib, TAP-dependent; cellular response to iron(III) ion; and protein refolding. Located in external side of plasma membrane. Is expressed in several structures, including central nervous system; early conceptus; genitourinary system; hemolymphoid system gland; and retina. Used to study hemochromatosis and type 1 diabetes mellitus. Human ortholog(s) of this gene implicated in arthritis; familial visceral amyloidosis; immunodeficiency 43; and inflammatory bowel disease.
Form	50mM Tris, 300mM NaCl, pH 8.5.
Molecular Mass	37.1 kDa
AA Sequence	DKTHTCPPCPAPPELLGGPSVFLFPPKPKDTLMISRTPEVTCVVVDVSHEDPEVKFNW YVDGVEVHNAKTKPREEQYNSTYRVVSVLTVLHQDWLNGKEYKCKVSNKALPAPIE KTISKAKGQPREPQVYTLPPSRDELTKNQVSLTCLVKGFYPSDIAVEWESNGQPEN

 Tel: 1-631-559-9269 1-516-512-3133

 Email: info@creative-biomart.com  Fax: 1-631-938-8127

 45-1 Ramsey Road, Shirley, NY 11967, USA



NYKTTTPVLDSGDGSFFLYSKLTVDKSRWQQGNVFSCSVMHEALHNHYTQKSLSLSP
GKIQKTPQIQVYSRHPPENGKPNILNCYVTQFHPPHIEIQMLKNGKKIPKVEMSDMSF
SKDWSFYILAHTFTPTETDTYACRVKHASMAEPKTVYWRDM

Purity > 90%

Storage Store it under sterile conditions at -20 to -80 centigrade. It is recommended that the protein be aliquoted for optimal storage. Avoid repeated freeze-thaw cycles.

Concentration 0.19mg/ml

GENE INFORMATION

Gene Name B2m beta-2 microglobulin [*Mus musculus* (house mouse)]

Official Symbol B2m

Synonyms Ly-m11; beta2m; beta2-m

Gene ID 12010

mRNA Refseq NM_009735

Protein Refseq NP_033865

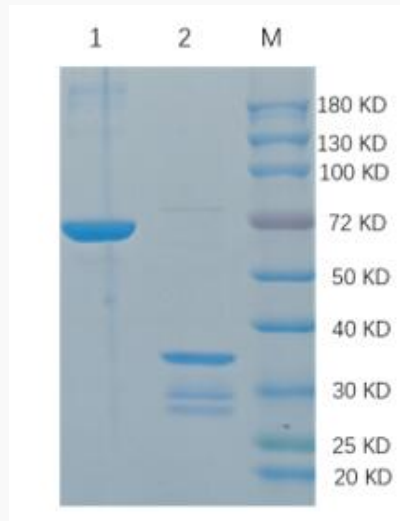
UniProt ID P01887

Tel: 1-631-559-9269 1-516-512-3133

Email: info@creative-biomart.com Fax: 1-631-938-8127

45-1 Ramsey Road, Shirley, NY 11967, USA

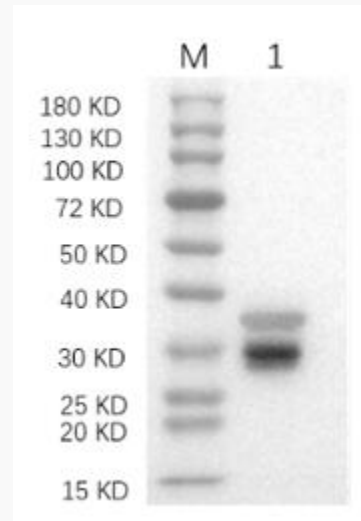
**Reducing 12% SDS-
PAGE and WB
analysis profiles of
purified B2M**



Lane1 BSA

Lane2 B2M

**Reducing 12% SDS-
PAGE and WB
analysis profiles of
purified B2M**



Anti-Fc

 Tel: 1-631-559-9269 1-516-512-3133

 Email: info@creative-biomart.com  Fax: 1-631-938-8127

 45-1 Ramsey Road, Shirley, NY 11967, USA