

Recombinant Human B2M Protein, His-tagged(C-ter)

Cat. No. B2M-07H Lot. No. (See product label)

SPECIFICATION

Product Overview	Recombinant Human B2M Protein with His tag (C-ter) was expressed in HEK293.
Species	Human
Source	HEK293
ProteinLength	Ile21-Met119
Description	This gene encodes a serum protein found in association with the major histocompatibility complex (MHC) class I heavy chain on the surface of nearly all nucleated cells. The protein has a predominantly beta-pleated sheet structure that can form amyloid fibrils in some pathological conditions. The encoded antimicrobial protein displays antibacterial activity in amniotic fluid. A mutation in this gene has been shown to result in hypercatabolic hypoproteinemia. [provided by RefSeq, Aug 2014]
Form	Powder
Endotoxin	Endotoxin level is less than 0.1 EU/μg of the protein, as determined by the LAL test.
Purity	> 97% (by SDS-PAGE)
Applications	Binding, SDS-PAGE
Notes	For laboratory research only, not for drug, diagnostic or other use.

 Tel: 1-631-559-9269 1-516-512-3133

 Email: info@creative-biomart.com  Fax: 1-631-938-8127

 45-1 Ramsey Road, Shirley, NY 11967, USA



Storage Lyophilized protein should be stored at -20°C or -80°C. After reconstitution, aliquot and store at -20°C for up to one month, at 2-8°C for up to one week. Storage in frost free freezers is not recommended. Avoid repeated freeze/thaw cycles. Suggest spin the vial prior to opening.

Storage Buffer PBS (pH 7.4)

Reconstitution Reconstitute to a concentration of 0.1-0.5 mg/ml in sterile distilled water.

GENE INFORMATION

Gene Name B2M beta-2-microglobulin [Homo sapiens]

Official Symbol B2M

Synonyms B2M; beta-2-microglobulin; beta-2-microglobin; beta chain of MHC class I molecules;

Gene ID 567

mRNA Refseq NM_004048

Protein Refseq NP_004039

MIM 109700

UniProt ID P61769

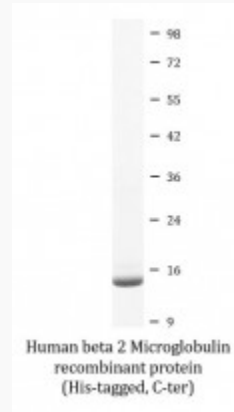
Tel: 1-631-559-9269 1-516-512-3133

Email: info@creative-biomart.com Fax: 1-631-938-8127

45-1 Ramsey Road, Shirley, NY 11967, USA



SDS-PAGE



Tel: 1-631-559-9269 1-516-512-3133

Email: info@creative-biomart.com Fax: 1-631-938-8127

45-1 Ramsey Road, Shirley, NY 11967, USA