

Recombinant Dog TRIM21 Protein, His/GST-tagged

Cat. No. B2M-314D Lot. No. (See product label)

SPECIFICATION

Product Overview	Recombinant Dog TRIM21(Met1~Asn125) fused with His/GST tag at N-terminal was expressed in E. coli.
Species	Dog
Source	E.coli
ProteinLength	Met1~Asn125
Description	B2M played an important role in many functions.
Form	PBS, pH7.4, containing 0.01% SKL, 1mM DTT, 5% Trehalose and Proclin300.
Molecular Mass	44.2kDa
Identity	Reconstitute in PBS or others
Endotoxin	<1.0EU per 1g (determined by the LAL method)
Purity	> 95%
Applications	Positive Control; Immunogen; SDS-PAGE; WB. If bio-activity of the protein is needed, please check active protein
Stability	The thermal stability is described by the loss rate. The loss rate was determined by

 Tel: 1-631-559-9269 1-516-512-3133

 Email: info@creative-biomart.com  Fax: 1-631-938-8127

 45-1 Ramsey Road, Shirley, NY 11967, USA

accelerated thermal degradation test, that is, incubate the protein at 37 centigrade for 48h, and no obvious degradation and precipitation were observed. The loss rate is less than 5% within the expiration date under appropriate storage condition.

Storage

Avoid repeated freeze/thaw cycles. Store at 2-8 centigrade for one month. Aliquot and store at -80 centigrade for 12 months.

Reconstitution

Reconstitute in PBS or others

GENE INFORMATION

Gene Name B2M beta-2-microglobulin [*Canis lupus familiaris*]

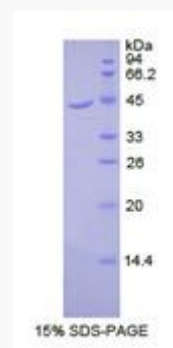
Official Symbol B2M

Synonyms beta-2-microglobulin

Gene ID 100855741

mRNA Refseq NM_001284479

Protein Refseq NP_001271408



 Tel: 1-631-559-9269 1-516-512-3133

 Email: info@creative-biomart.com  Fax: 1-631-938-8127

 45-1 Ramsey Road, Shirley, NY 11967, USA