

Recombinant Human B2M protein, rFc-tagged

Cat. No. B2M-3683H Lot. No. (See product label)

SPECIFICATION

Product Overview	Recombinant Human B2M protein(P61769)(Ile21-Met119), fused with C-terminal rFc tag, was expressed in HEK293.
Species	Human
Source	HEK293
Form	Lyophilized from 0.22 µm filtered solution in PBS, pH 7.4. Normally 5% trehalose and 5% mannitol are added as protectants before lyophilization.
Molecular Mass	38.0 kDa
Endotoxin	<0.1 EU/µg protein, LAL method
Purity	>90 %, SDS-PAGE
Storage	It is recommended that the protein be aliquoted for optimal storage. Avoid repeated freeze-thaw cycles. Until expiry date, -20°C to -80°C as lyophilized proteins. 3 months, -20°C to -80°C under sterile conditions after reconstitution.
Reconstitution	Briefly centrifuge the tube before opening. Reconstitute at 0.1-0.5 mg/mL in sterile water.

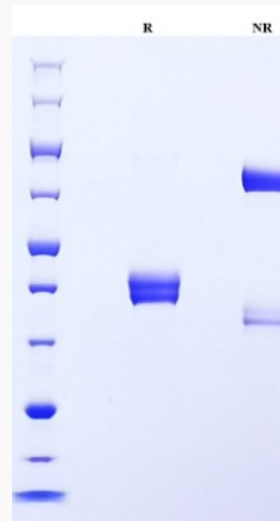
GENE INFORMATION

 Tel: 1-631-559-9269 1-516-512-3133

 Email: info@creative-biomart.com  Fax: 1-631-938-8127

 45-1 Ramsey Road, Shirley, NY 11967, USA

Gene Name	B2M beta-2-microglobulin [Homo sapiens]
Official Symbol	B2M
Synonyms	B2M; beta-2-microglobulin; beta-2-microglobin; beta chain of MHC class I molecules;
Gene ID	567
mRNA Refseq	NM_004048
Protein Refseq	NP_004039
MIM	109700
UniProt ID	P61769

SDS-PAGE


 Tel: 1-631-559-9269 1-516-512-3133

 Email: info@creative-biomart.com  Fax: 1-631-938-8127

 45-1 Ramsey Road, Shirley, NY 11967, USA