

## Recombinant Pig B2M protein

Cat. No. B2M-464P    Lot. No. (See product label)

### SPECIFICATION

<b>Product Overview</b>	Recombinant Pig B2M protein(Q07717)(21-118aa) was expressed in E.coli.
<b>Species</b>	Pig
<b>Source</b>	E.coli
<b>ProteinLength</b>	21-118a.a.
<b>Tag</b>	Non
<b>Form</b>	If the delivery form is liquid, the default storage buffer is Tris/PBS-based buffer, 5%-50% glycerol. If the delivery form is lyophilized powder, the buffer before lyophilization is Tris/PBS-based buffer, 6% Trehalose, pH 8.0.
<b>Molecular Mass</b>	11.5 kDa
<b>Purity</b>	Greater than 90% as determined by SDS-PAGE.
<b>Storage</b>	Store at -20°C/-80°C upon receipt, aliquoting is necessary for mutiple use. Avoid repeated freeze-thaw cycles.
<b>Reconstitution</b>	We recommend that this vial be briefly centrifuged prior to opening to bring the contents to the bottom. Please reconstitute protein in deionized sterile water to a concentration of 0.1-1.0 mg/mL.We recommend to add 5-50% of glycerol (final concentration) and aliquot for long-term storage at -20°C/-80°C.

 Tel: 1-631-559-9269    1-516-512-3133

 Email: [info@creative-biomart.com](mailto:info@creative-biomart.com)     Fax: 1-631-938-8127

 45-1 Ramsey Road, Shirley, NY 11967, USA

**AA Sequence**                    VARPPKVQVYSRHPAENGKPNYLNCYVSGFHPPQIEIDLLKNGEKMNAEQSDLSFS  
 KDWSFYLLVHTEFTPNAVDQYSCRVKHVTLDKPKIVKWDRDH

## GENE INFORMATION

**Gene Name**                    B2M beta-2-microglobulin [ *Sus scrofa* ]

**Official Symbol**            B2M

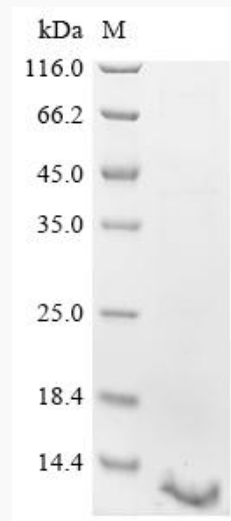
**Synonyms**                    B2M; beta-2-microglobulin; lactollin; beta 2-microglobulin;

**Gene ID**                        397033

**mRNA Refseq**                NM\_213978

**Protein Refseq**               NP\_999143

## SDS-PAGE



 Tel: 1-631-559-9269    1-516-512-3133

 Email: [info@creative-biomart.com](mailto:info@creative-biomart.com)     Fax: 1-631-938-8127

 45-1 Ramsey Road, Shirley, NY 11967, USA