

# Recombinant Human B2M Protein, Myc/DDK-tagged, C13 and N15-labeled

**Cat. No.** B2M-6236H    **Lot. No.** (See product label)

## SPECIFICATION

<b>Product Overview</b>	B2M MS Standard C13 and N15-labeled recombinant protein (NP_004039) with a C-terminal MYC/DDK tag, was expressed in HEK293 cells.
<b>Species</b>	Human
<b>Source</b>	HEK293
<b>Description</b>	This gene encodes a serum protein found in association with the major histocompatibility complex (MHC) class I heavy chain on the surface of nearly all nucleated cells. The protein has a predominantly beta-pleated sheet structure that can form amyloid fibrils in some pathological conditions. The encoded antimicrobial protein displays antibacterial activity in amniotic fluid. A mutation in this gene has been shown to result in hypercatabolic hypoproteinemia.
<b>Molecular Mass</b>	13.71 kDa
<b>AA Sequence</b>	MSRSVALAVLALLSLSGLEAIQRTPKIQVYSRHPAENGKSNFLNCYVSGFHPSDIEVD LLKNGERIEKVEHSDLSFSKDWFSYLLLYTEFTPTTEKDEYACRVNHVTLSPKIVKW DRDMTRTRPLEQKLISEEDLAANDILDYKDDDDKV
<b>Purity</b>	> 80% as determined by SDS-PAGE and Coomassie blue staining
<b>Stability</b>	Stable for 3 months from receipt of products under proper storage and handling conditions.

 Tel: 1-631-559-9269    1-516-512-3133

 Email: [info@creative-biomart.com](mailto:info@creative-biomart.com)     Fax: 1-631-938-8127

 45-1 Ramsey Road, Shirley, NY 11967, USA

<b>Storage</b>	Store at -80 centigrade. Avoid repeated freeze-thaw cycles.
----------------	---

<b>Concentration</b>	50 µg/mL as determined by BCA
----------------------	-------------------------------

<b>Storage Buffer</b>	100 mM glycine, 25 mM Tris-HCl, pH 7.3.
-----------------------	---

## GENE INFORMATION

<b>Gene Name</b>	B2M beta-2-microglobulin [ Homo sapiens (human) ]
------------------	---

<b>Official Symbol</b>	B2M
------------------------	-----

<b>Synonyms</b>	B2M; beta-2-microglobulin; beta-2-microglobin; beta chain of MHC class I molecules;
-----------------	---

<b>Gene ID</b>	567
----------------	-----

<b>mRNA Refseq</b>	NM_004048
--------------------	-----------

<b>Protein Refseq</b>	NP_004039
-----------------------	-----------

<b>MIM</b>	109700
------------	--------

<b>UniProt ID</b>	P61769
-------------------	--------

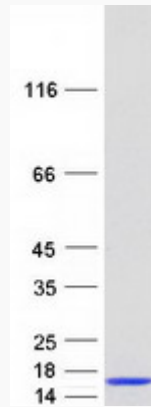
 Tel: 1-631-559-9269 1-516-512-3133

 Email: [info@creative-biomart.com](mailto:info@creative-biomart.com)  Fax: 1-631-938-8127

 45-1 Ramsey Road, Shirley, NY 11967, USA



SDS-PAGE



Tel: 1-631-559-9269 1-516-512-3133

Email: [info@creative-biomart.com](mailto:info@creative-biomart.com) Fax: 1-631-938-8127

45-1 Ramsey Road, Shirley, NY 11967, USA