

Recombinant Human B2M protein, hFc-tagged

Cat. No. B2M-6744H **Lot. No.** (See product label)

SPECIFICATION

Product Overview	Recombinant Human B2M protein(P61769-1)(Ile21-Met119), fused with C-terminal hFc tag, was expressed in HEK293.
Species	Human
Source	HEK293
ProteinLength	Ile21-Met119
Tag	C-hFc
Form	Supplied as 0.22µm filtered solution in PBS (pH 7.4).
Molecular Mass	The protein has a predicted MW of 38.4 kDa. Due to glycosylation, the protein migrates to 40-50 kDa based on Tris-Bis PAGE result.
Endotoxin	Less than 1EU per µg by the LAL method.
Purity	> 95% as determined by Tris-Bis PAGE;> 95% as determined by HPLC
Storage	Valid for 12 months from date of receipt when stored at -80°C. Recommend to aliquot the protein into smaller quantities for optimal storage. Please do not repeated freeze-thaw cycles.
Reconstitution	It is recommended that sterile water be added to the vial to prepare a stock solution of

 Tel: 1-631-559-9269 1-516-512-3133

 Email: info@creative-biomart.com  Fax: 1-631-938-8127

 45-1 Ramsey Road, Shirley, NY 11967, USA

0.2 ug/ul. Centrifuge the vial at 4°C before opening to recover the entire contents.

GENE INFORMATION

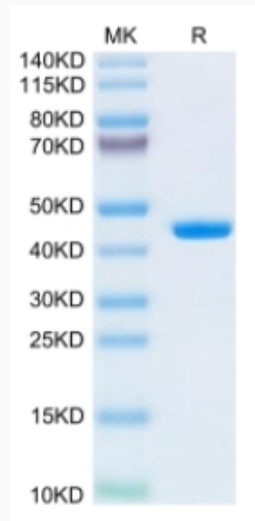
Gene Name	B2M beta-2-microglobulin [Homo sapiens]
Official Symbol	B2M
Synonyms	B2M; beta-2-microglobulin; beta-2-microglobin; beta chain of MHC class I molecules;
Gene ID	567
mRNA Refseq	NM_004048
Protein Refseq	NP_004039
MIM	109700
UniProt ID	P61769

 Tel: 1-631-559-9269 1-516-512-3133

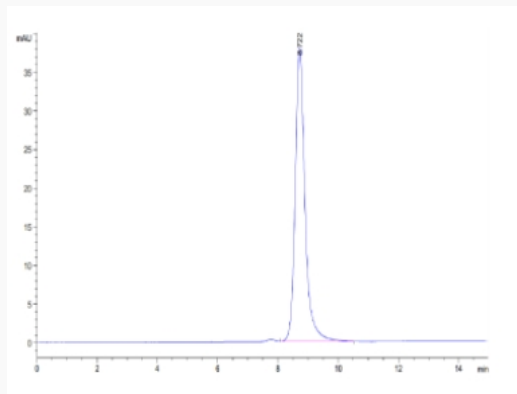
 Email: info@creative-biomart.com  Fax: 1-631-938-8127

 45-1 Ramsey Road, Shirley, NY 11967, USA

Tris-Bis PAGE



SEC-HPLC



 Tel: 1-631-559-9269 1-516-512-3133

 Email: info@creative-biomart.com  Fax: 1-631-938-8127

 45-1 Ramsey Road, Shirley, NY 11967, USA