

Recombinant Human B3GALT1 protein, GST-tagged

Cat. No. B3GALT1-005H Lot. No. (See product label)

SPECIFICATION

Product Overview Human B3GALT1 partial ORF (NP_066191.1, 59 a.a. - 150 a.a.) recombinant protein with GST-tag at N-terminal.

Species Human

Source Wheat Germ

Description This gene is a member of the beta-1,3-galactosyltransferase (beta3GalT) gene family. This family encodes type II membrane-bound glycoproteins with diverse enzymatic functions using different donor substrates (UDP-galactose and UDP-N-acetylglucosamine) and different acceptor sugars (N-acetylglucosamine, galactose, N-acetylgalactosamine). The beta3GalT genes are distantly related to the Drosophila Brainiac gene and have the protein coding sequence contained in a single exon. The beta3GalT proteins also contain conserved sequences not found in the beta4GalT or alpha3GalT proteins. The carbohydrate chains synthesized by these enzymes are designated as type 1, whereas beta4GalT enzymes synthesize type 2 carbohydrate chains. The ratio of type 1:type 2 chains changes during embryogenesis. By sequence similarity, the beta3GalT genes fall into at least two groups: beta3GalT4 and 4 other beta3GalT genes (beta3GalT1-3, beta3GalT5). This gene is expressed exclusively in the brain. The encoded protein shows strict donor substrate specificity for UDP-galactose.

Form 50 mM Tris-HCl, 10 mM reduced Glutathione, pH=8.0 in the elution buffer.

 Tel: 1-631-559-9269 1-516-512-3133

 Email: info@creative-biomart.com  Fax: 1-631-938-8127

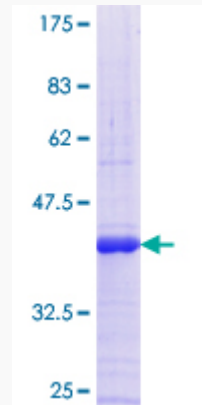
 45-1 Ramsey Road, Shirley, NY 11967, USA

Molecular Mass	35.86 kDa
AA Sequence	NPHSFEFLINEPNKCEKNIPFLVILISTTHKEFDARQAIRETWGDENNFKGIKIATLFLLL GKNADPVLNQMVEQESQIFHDIIVEDFIDSYH
Notes	Best use within three months from the date of receipt of this protein.
Storage	Store at -80 centigrade. Aliquot to avoid repeated freezing and thawing.
GENE INFORMATION	
Gene Name	B3GALT1 UDP-Gal:betaGlcNAc beta 1,3-galactosyltransferase, polypeptide 1 [Homo sapiens (human)]
Official Symbol	B3GALT1
Synonyms	B3GALT1; beta3Gal-T1; UDP-Gal:betaGlcNAc beta 1,3-galactosyltransferase, polypeptide 1; beta-1,3-galactosyltransferase 1; beta3GalT1; beta-3-galt1; beta-1,3-GalTase 1; UDP-galactose:beta-N-acetyl-glucosamine-beta-1,3-galactosyltransferase 1; NP_066191.1; EC 2.4.1.179
Gene ID	8708
mRNA Refseq	NM_020981
Protein Refseq	NP_066191
MIM	603093
UniProt ID	Q9Y5Z6

 Tel: 1-631-559-9269 1-516-512-3133

 Email: info@creative-biomart.com  Fax: 1-631-938-8127

 45-1 Ramsey Road, Shirley, NY 11967, USA



Tel: 1-631-559-9269 1-516-512-3133

Email: info@creative-biomart.com Fax: 1-631-938-8127

45-1 Ramsey Road, Shirley, NY 11967, USA