

Recombinant Human B3GALT2 protein, GST-tagged

Cat. No. B3GALT2-006H Lot. No. (See product label)

SPECIFICATION

Product Overview	Human B3GALT2 full-length ORF (NP_003774.1, 1 a.a. - 422 a.a.) recombinant protein with GST-tag at N-terminal.
Species	Human
Source	Wheat Germ
Description	<p>This gene is a member of the beta-1,3-galactosyltransferase (beta3GalT) gene family. This family encodes type II membrane-bound glycoproteins with diverse enzymatic functions using different donor substrates (UDP-galactose and UDP-N-acetylglucosamine) and different acceptor sugars (N-acetylglucosamine, galactose, N-acetylgalactosamine). The beta3GalT genes are distantly related to the Drosophila Brainiac gene and have the protein coding sequence contained in a single exon. The beta3GalT proteins also contain conserved sequences not found in the beta4GalT or alpha3GalT proteins. The carbohydrate chains synthesized by these enzymes are designated as type 1, whereas beta4GalT enzymes synthesize type 2 carbohydrate chains. The ratio of type 1:type 2 chains changes during embryogenesis. By sequence similarity, the beta3GalT genes fall into at least two groups: beta3GalT4 and 4 other beta3GalT genes (beta3GalT1-3, beta3GalT5). This gene encodes a protein that functions in N-linked glycoprotein glycosylation and shows strict donor substrate specificity for UDP-galactose. [provided by RefSeq]</p>
Form	50 mM Tris-HCl, 10 mM reduced Glutathione, pH=8.0 in the elution buffer.

 Tel: 1-631-559-9269 1-516-512-3133

 Email: info@creative-biomart.com  Fax: 1-631-938-8127

 45-1 Ramsey Road, Shirley, NY 11967, USA

Molecular Mass	75.6 kDa
AA Sequence	<p>MLQWRRRHCCFAKMTWNAKRSLFRTHLIGVLSLVFLFAMFLFFNHHDWLPGRAGF KENPVITYTFRGFRSTKSETNHSSLRNIWKETVPQTLRPQTATNSNNTDLSPQGVGTG LENTLSANGSIYNEKGTGHPNSYHFKEYIINEPEKCKEQKSPFLILLIAAEPGQIEARRAIR QTWGNESLAPGIQITRIFLLGLSIKLNQYLQRAILEESRQYHDIQQEYLDTYYNLTIKTL MGMNWVATYCPHIPYVMKTDSDMFVNTEYLINKLLKPDLPFRHNYFTGYLMRGYAP NRNKDSKWYMPDLYPSERYPVFCSGTGYVFSGLDLAEKIFKVSLGIRRLHLEDVYV GICLAKLRIDVPPPNEFVFNHWRVSYSSCKYSHLITSHQFQPSELIKYWNHLQQNK HNACANAAKEKAGRYRHRKLNH</p>
Notes	Best use within three months from the date of receipt of this protein.
Storage	Store at -80 centigrade. Aliquot to avoid repeated freezing and thawing.
GENE INFORMATION	
Gene Name	B3GALT2 UDP-Gal:betaGlcNAc beta 1,3-galactosyltransferase, polypeptide 2 [Homo sapiens]
Official Symbol	B3GALT2
Synonyms	B3GALT2; UDP-Gal:betaGlcNAc beta 1,3-galactosyltransferase, polypeptide 2; beta-1,3-galactosyltransferase 2; beta3Gal T2; beta-3-galt2; beta-1,3-GalTase 2; UDP-galactose:2-acetamido-2-deoxy-D-glucose 3beta-galactosyltransferase 2; GLCT2; BETA3GALT2; beta3Gal-T2;
Gene ID	8707
mRNA Refseq	NM_003783

 Tel: 1-631-559-9269 1-516-512-3133

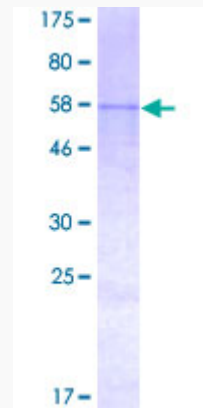
 Email: info@creative-biomart.com  Fax: 1-631-938-8127

 45-1 Ramsey Road, Shirley, NY 11967, USA

Protein Refseq NP_003774

MIM 603018

UniProt ID O43825



 Tel: 1-631-559-9269 1-516-512-3133

 Email: info@creative-biomart.com  Fax: 1-631-938-8127

 45-1 Ramsey Road, Shirley, NY 11967, USA