

Recombinant Human B3GALT5 Protein, Myc/DDK-tagged, C13 and N15-labeled

Cat. No. B3GALT5-2221H **Lot. No.** (See product label)

SPECIFICATION

Product Overview	B3GALT5 MS Standard C13 and N15-labeled recombinant protein (NP_149360) with a C-terminal MYC/DDK tag, was expressed in HEK293 cells.
Species	Human
Source	HEK293
Description	This gene encodes a member of a family of membrane-bound glycoproteins. The encoded protein may synthesize type 1 Lewis antigens, which are elevated in gastrointestinal and pancreatic cancers. Alternatively spliced transcript variants using multiple alternate promoters have been observed for this gene.
Molecular Mass	36 kDa
AA Sequence	MAFPKMRLMYICLLVLGALCLYFSMYSLNPFKEQSFVYKKDGNFLKLPDTCRQTPP FLVLLVTSSHKQLAERMAIRQTWGKERMVKGKQLKTFLLGTTSSAAETKEVDQES QRHGDIIQKDFLDVYYNLTLLKTMGIEWVHRFCPQAAFVMKTDSDMFINVDYLTELL LKKNRTRRFFTGFLKLNFPPIRQPFSKWFVSKSEYPWDRYPPFCSGTGYVFSGDVA SQVYNVSKSVPIKLEDVFGVGLCLERLNIRLEELHSQPTFFPGGLRFSVCLFRRIVAC HFIKPRLLDYWQALENSRGEDCPPVTRTRPLEQKLISEEDLAANDILDYKDDDDKV
Purity	> 80% as determined by SDS-PAGE and Coomassie blue staining
Stability	Stable for 3 months from receipt of products under proper storage and handling

 Tel: 1-631-559-9269 1-516-512-3133

 Email: info@creative-biomart.com  Fax: 1-631-938-8127

 45-1 Ramsey Road, Shirley, NY 11967, USA

conditions.

Storage Store at -80 centigrade. Avoid repeated freeze-thaw cycles.

Concentration 50 µg/mL as determined by BCA

Storage Buffer 100 mM glycine, 25 mM Tris-HCl, pH 7.3.

GENE INFORMATION

Gene Name B3GALT5 beta-1,3-galactosyltransferase 5 [Homo sapiens (human)]

Official Symbol B3GALT5

Synonyms B3GALT5; beta-1,3-galactosyltransferase 5; beta-1,3-galactosyltransferase 5; UDP-Gal:betaGlcNAc beta 1,3-galactosyltransferase, polypeptide 5; UDP-galactose:beta-N-acetylglucosamine beta-1,3-galactosyltransferase 5; homolog of C. elegans Bt toxin resistance gene bre-5; EC 2.4.1.-

Gene ID 10317

mRNA Refseq NM_033170

Protein Refseq NP_149360

MIM 604066

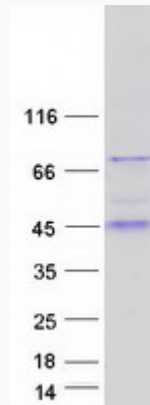
UniProt ID Q9Y2C3

 Tel: 1-631-559-9269 1-516-512-3133

 Email: info@creative-biomart.com  Fax: 1-631-938-8127

 45-1 Ramsey Road, Shirley, NY 11967, USA

SDS-PAGE



 Tel: 1-631-559-9269 1-516-512-3133

 Email: info@creative-biomart.com  Fax: 1-631-938-8127

 45-1 Ramsey Road, Shirley, NY 11967, USA