

Recombinant Human B3GALT6 protein, GST-tagged

Cat. No. B3GALT6-012H Lot. No. (See product label)

SPECIFICATION

Product Overview	Human B3GALT6 partial ORF (NP_542172, 229 a.a. - 329 a.a.) recombinant protein with GST-tag at N-terminal.
Species	Human
Source	Wheat Germ
Form	50 mM Tris-HCl, 10 mM reduced Glutathione, pH=8.0 in the elution buffer.
Molecular Mass	36.85 kDa
AA Sequence	RLSRDYLRWHSSEVSLGAWLAPVDVQREHDPFRDTEYRSRGCSNQYLVTHKQSL EDMLEKHATLAREGRLCKREVQLRLSYVYDWSAPPSQCCQRREGIP
Notes	Best use within three months from the date of receipt of this protein.
Storage	Store at -80 centigrade. Aliquot to avoid repeated freezing and thawing.

GENE INFORMATION

Gene Name	B3GALT6 UDP-Gal:betaGal beta 1,3-galactosyltransferase polypeptide 6 [Homo sapiens]
Official Symbol	B3GALT6

 Tel: 1-631-559-9269 1-516-512-3133

 Email: info@creative-biomart.com  Fax: 1-631-938-8127

 45-1 Ramsey Road, Shirley, NY 11967, USA

Synonyms

B3GALT6; UDP-Gal:betaGal beta 1,3-galactosyltransferase polypeptide 6; UDP Gal:betaGlcNAc beta 1,3 galactosyltransferase, polypeptide 6; beta-1,3-galactosyltransferase 6; beta 1; 3 galactosyltransferase 6; beta3GalT6; GAG GalTII; beta3Gal-T6; beta-1,3-GalTase 6; galactosyltransferase II; galactosylxylosylprotein 3-beta-galactosyltransferase; UDP-Gal:betaGlcNAc beta 1,3-galactosyltransferase, polypeptide 6;

Gene ID

126792

mRNA Refseq

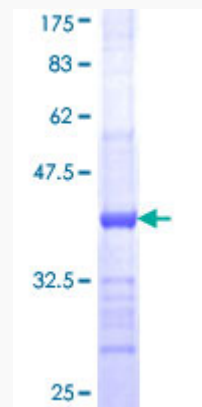
NM_080605

Protein Refseq

NP_542172

UniProt ID

Q96L58



 Tel: 1-631-559-9269 1-516-512-3133

 Email: info@creative-biomart.com  Fax: 1-631-938-8127

 45-1 Ramsey Road, Shirley, NY 11967, USA