

Recombinant Human B3GALTL protein, GST-tagged

Cat. No. B3GALTL-013H Lot. No. (See product label)

SPECIFICATION

Product Overview	Human B3GALTL full-length ORF (NP_919299.2, 1 a.a. - 498 a.a.) recombinant protein with GST-tag at N-terminal.
Species	Human
Source	Wheat Germ
Description	The protein encoded by this gene is a beta-1,3-glucosyltransferase that transfers glucose to O-linked fucosylglycans on thrombospondin type-1 repeats (TSRs) of several proteins. The encoded protein is a type II membrane protein. Defects in this gene are a cause of Peters-plus syndrome (PPS).
Form	50 mM Tris-HCl, 10 mM reduced Glutathione, pH=8.0 in the elution buffer.
Molecular Mass	83 kDa
AA Sequence	MRPPACWWLLAPPALLALLTCSLAFGLASEDTKKEVKQSQDLEKSGISRKNDIDLKGI VFVIQSQSNSFHAKRAEQLKKSILKQAADLTQELPSVLLLHQLAKQEGAWTILPLLPH FSVTYSRNSSWIFFCEEETRIQIPKLETLRRYDPSKEWFLGKALHDEEATIIHHYAFS ENPTVFKYPDFAAGWALSIPLVNKLTKRLKSESLKSDFTIDLKHEIALYIWDKGGGPPL TPVPEFCTNDVDFYCATTFFHSFLPLCRKPVKKKIDIFVAVKTCKKFHGDRIPIVKQTWE SQASLIEYYSDYTENSIPTVDLGIPNTDRGHCGKTFAILERFLNRSQDKTAWLVIVDD DTLISISRLQHLLSCYDSGKPVFLGERYGYGLGTGGYSYITGGGGMVFSREAVRRLL ASKCRCYSNDAPDDMVLGMCFSGLGIPVTHSPLFHQARPVDYPKDYLSHQVPISFH KHWNIDPVKVYFTWLAPSDDEDKARQETQKGFREEL

 Tel: 1-631-559-9269 1-516-512-3133

 Email: info@creative-biomart.com  Fax: 1-631-938-8127

 45-1 Ramsey Road, Shirley, NY 11967, USA

Notes Best use within three months from the date of receipt of this protein.

Storage Store at -80 centigrade. Aliquot to avoid repeated freezing and thawing.

GENE INFORMATION

Gene Name B3GALTL beta 1,3-galactosyltransferase-like [Homo sapiens]

Official Symbol B3GALTL

Synonyms B3GALTL; beta 1,3-galactosyltransferase-like; beta-1,3-glucosyltransferase; B3Glc T; B3GTL; beta 3-glycosyltransferase-like; beta-3-glycosyltransferase-like; UDP-GAL:beta-GlcNAc beta-1,3-galactosyltransferase-like; Gal-T; B3GLCT; B3Glc-T; beta3Glc-T;

Gene ID 145173

mRNA Refseq NM_194318

Protein Refseq NP_919299

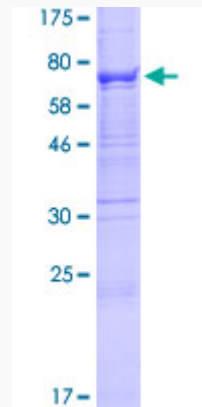
MIM 610308

UniProt ID Q6Y288

 Tel: 1-631-559-9269 1-516-512-3133

 Email: info@creative-biomart.com  Fax: 1-631-938-8127

 45-1 Ramsey Road, Shirley, NY 11967, USA



 Tel: 1-631-559-9269 1-516-512-3133

 Email: info@creative-biomart.com  Fax: 1-631-938-8127

 45-1 Ramsey Road, Shirley, NY 11967, USA