

Recombinant Human B3GALTL protein, GST-tagged

Cat. No. B3GALTL-10098H Lot. No. (See product label)

SPECIFICATION

Product Overview	Recombinant Human B3GALTL protein(199-498 aa), fused with N-terminal GST tag, was expressed in E.coli.
Species	Human
Source	E.coli
ProteinLength	199-498 aa
Form	The purified protein was lyophilized from sterile phosphate-buffered saline (PBS: 58 mM Na ₂ HPO ₄ , 17 mM NaH ₂ PO ₄ , 68 mM NaCl, pH 8.0). Prior to lyophilization, 5% (w/v) trehalose and 5% (w/v) mannitol were incorporated as cryoprotective excipients.
AASequence	<p> KLTkRLKSESLKSDFTIDLKHEIALYIWDKGGGPPLTPVPEFCTNDVDFYCATTfHSFL PLCRKPVKKKDIFVAVKTCKKFHGDRMPIVKQTWESQASLIEYYSDYTENSIPTVDLG IPNTDRGHCGKTFAILERFLNRSQDKTAWLVIVDDDTLISISRLQHLLSCYDSGKPVFL GERYGYGLGTGGYSYITGGGGMVFSREAVRLLASKCRCYSNDAPDDMVLGMCFS GLGIPVTHSPLFHQARPVDYPKDYLSHQVPISFHKHWNIDPVKVYFTWLAPSDDEKA RQETQKGFREEL </p>
Purity	85%, by SDS-PAGE with Coomassie Brilliant Blue staining.
Storage	Store at 2-8°C for 1-2 weeks. Aliquot and store at -20°C to -80°C for up to 3 months, reconstitution with sterile water and addition of an equal volume of glycerol. Avoid

 Tel: 1-631-559-9269 1-516-512-3133

 Email: info@creative-biomart.com  Fax: 1-631-938-8127

 45-1 Ramsey Road, Shirley, NY 11967, USA

repeat freeze-thaw cycles.

Reconstitution

Dissolve the product in 200 µl sterile water to achieve a working concentration of 0.25 g/µl. If experimental compatibility allows, mix the aqueous solution with an equal volume of glycerol (1:1 ratio) after initial reconstitution.

GENE INFORMATION

Gene Name [B3GALTL beta 1,3-galactosyltransferase-like \[Homo sapiens \]](#)

Official Symbol [B3GALTL](#)

Synonyms

B3GALTL; beta 1,3-galactosyltransferase-like; beta-1,3-glucosyltransferase; B3Glc T; B3GTL; beta 3-glycosyltransferase-like; beta-3-glycosyltransferase-like; UDP-GAL:beta-GlcNAc beta-1,3-galactosyltransferase-like; Gal-T; B3GLCT; B3Glc-T; beta3Glc-T;

Gene ID [145173](#)

mRNA Refseq [NM_194318](#)

Protein Refseq [NP_919299](#)

MIM [610308](#)

UniProt ID [Q6Y288](#)

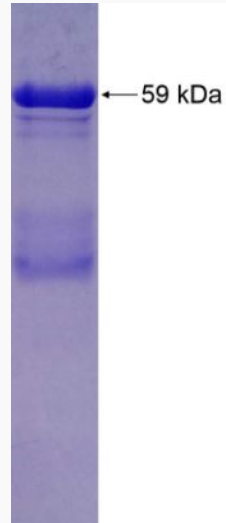
 Tel: 1-631-559-9269 1-516-512-3133

 Email: info@creative-biomart.com  Fax: 1-631-938-8127

 45-1 Ramsey Road, Shirley, NY 11967, USA



SDS-PAGE



Tel: 1-631-559-9269 1-516-512-3133

Email: info@creative-biomart.com Fax: 1-631-938-8127

45-1 Ramsey Road, Shirley, NY 11967, USA