

Recombinant Human B3GAT3 protein, GST-tagged

Cat. No. B3GAT3-016H Lot. No. (See product label)

SPECIFICATION

Product Overview	Human B3GAT3 full-length ORF (NP_036332.2, 1 a.a. - 335 a.a.) recombinant protein with GST-tag at N-terminal.
Species	Human
Source	Wheat Germ
Description	The protein encoded by this gene is a member of the glucuronyltransferase gene family, enzymes that exhibit strict acceptor specificity, recognizing nonreducing terminal sugars and their anomeric linkages. This gene product catalyzes the formation of the glycosaminoglycan-protein linkage by way of a glucuronyl transfer reaction in the final step of the biosynthesis of the linkage region of proteoglycans. [provided by RefSeq]
Form	50 mM Tris-HCl, 10 mM reduced Glutathione, pH=8.0 in the elution buffer.
Molecular Mass	63.5 kDa
AA Sequence	MKLKLNKVFLLAYFLVSIAGLLYALVQLGQPCDCLPPLRAAAEQLRQKDLRISQLQAEL RRPPPAPAQPPEPEALPTIYVVTPTYARLVQKAELVRLSQTLSLVPRLHWLLVEDAE GPTPLVSGLLAASGLLFTHLVVLTPKAQRLREGEPGWVHPRGVEQRNKALDWLRG RGGAVGGEKDPPPPGTQGVVYFADDDNTYSRELFEEMRWTRGVSVPVGLVGGGL RFEGPQVQDGRVVGFFHTAWEPSRPFVDMAGFAVALPLLLDKPNAQFDSTAPRGH LESSLLSHLVDPKDLEPRAANCTRVLVWHTRTEKPKMKQEEQLRQGRGSDPAIEV

 Tel: 1-631-559-9269 1-516-512-3133

 Email: info@creative-biomart.com  Fax: 1-631-938-8127

 45-1 Ramsey Road, Shirley, NY 11967, USA

Notes Best use within three months from the date of receipt of this protein.

Storage Store at -80 centigrade. Aliquot to avoid repeated freezing and thawing.

GENE INFORMATION

Gene Name B3GAT3 beta-1,3-glucuronyltransferase 3 (glucuronosyltransferase I) [Homo sapiens]

Official Symbol B3GAT3

Synonyms B3GAT3; beta-1,3-glucuronyltransferase 3 (glucuronosyltransferase I); galactosylgalactosylxylosylprotein 3-beta-glucuronosyltransferase 3; GlcAT I; glcUAT-I; Sqv-8-like protein; UDP-GlcUA:Gal beta-1,3-Gal-R glucuronyltransferase; GLCATI;

Gene ID 26229

mRNA Refseq NM_012200

Protein Refseq NP_036332

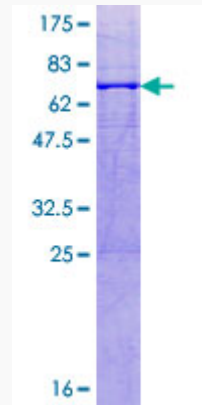
MIM 606374

UniProt ID O94766

 Tel: 1-631-559-9269 1-516-512-3133

 Email: info@creative-biomart.com  Fax: 1-631-938-8127

 45-1 Ramsey Road, Shirley, NY 11967, USA



 Tel: 1-631-559-9269 1-516-512-3133

 Email: info@creative-biomart.com  Fax: 1-631-938-8127

 45-1 Ramsey Road, Shirley, NY 11967, USA