

Active Recombinant Human B4GALT1 Protein (AA 63-398), N-6xHis/GFP tagged

Cat. No. B4GALT1-21H Lot. No. (See product label)

SPECIFICATION

Product Overview

Recombinant Human B4GALT1 Protein (AA 63-398) with N-6xHis/GFP tag was expressed in HEK293.

Species

Human

Source

HEK293

ProteinLength

AA 63-398

Description

This gene is one of seven beta-1,4-galactosyltransferase (beta4GalT) genes. They encode type II membrane-bound glycoproteins that appear to have exclusive specificity for the donor substrate UDP-galactose; all transfer galactose in a beta1,4 linkage to similar acceptor sugars: GlcNAc, Glc, and Xyl. Each beta4GalT has a distinct function in the biosynthesis of different glycoconjugates and saccharide structures. As type II membrane proteins, they have an N-terminal hydrophobic signal sequence that directs the protein to the Golgi apparatus and which then remains uncleaved to function as a transmembrane anchor. By sequence similarity, the beta4GalTs form four groups: beta4GalT1 and beta4GalT2, beta4GalT3 and beta4GalT4, beta4GalT5 and beta4GalT6, and beta4GalT7. This gene is unique among the beta4GalT genes because it encodes an enzyme that participates both in glycoconjugate and lactose biosynthesis. For the first activity, the enzyme adds galactose to N-acetylglucosamine residues that are either monosaccharides or the nonreducing ends of glycoprotein carbohydrate chains. The second activity is

 Tel: 1-631-559-9269 1-516-512-3133

 Email: info@creative-biomart.com  Fax: 1-631-938-8127

 45-1 Ramsey Road, Shirley, NY 11967, USA

restricted to lactating mammary tissues where the enzyme forms a heterodimer with alpha-lactalbumin to catalyze $\text{UDP-galactose} + \text{D-glucose} \rightleftharpoons \text{UDP} + \text{lactose}$. The two enzymatic forms result from alternate transcription initiation sites and post-translational processing. Two transcripts, which differ only at the 5' end, with approximate lengths of 4.1 kb and 3.9 kb encode the same protein. The longer transcript encodes the type II membrane-bound, trans-Golgi resident protein involved in glycoconjugate biosynthesis. The shorter transcript encodes a protein which is cleaved to form the soluble lactose synthase.

Bio-activity $\geq 0.8 \mu\text{mol}/\text{min}/\text{mg}$

Molecular Mass ~65-70 kDa

AA Sequence

GSNSAAAIGQSSGELRTGGARPPPPLGASSQPRPGGDSSPVVDSGPGPASNLTSV
 PVPHTTALSPLACPEESPLLVGPMLEFNMPVDLELVAKQNPVVKMGGRYAPRDCV
 SPHKVAIIIPFRNRQEHLKYWLYLHPVLQRQQLDYGIVINQAGDTIFNRAKLLNVGF
 QEALKDYDYTCFVFSVDLIPMNDHNAYRCFSQPRHISVAMDKFGFSLPYVQYFGG
 VSALSKQQFLTINGFPNNYWGWWGGEDDDIFNRLVFRGMSISRPNAVVGRCRMIRHS
 RDKKNEPNPQRFDRIAHTKETMLSDGLNSLTYQVLDVQRYPLYTQITVDIGTPS

Purity >95%, by SDS-PAGE under reducing conditions and visualized by Coomassie Blue stain.

Stability 6 months if stored at -80 centigrade. Avoid repeated freeze thaws.

Concentration 1 mg/mL

Storage Buffer Supplied as a 0.2 μm filtered solution in 20mM HEPES pH 7.0 and 100mM NaCl buffer, with 10% Glycerol.

 Tel: 1-631-559-9269 1-516-512-3133

 Email: info@creative-biomart.com  Fax: 1-631-938-8127

 45-1 Ramsey Road, Shirley, NY 11967, USA

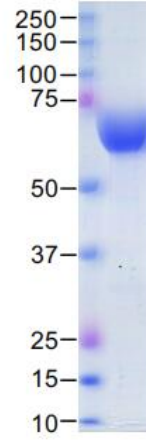
Preservative	0.05 % NaN ₃
Shipping	This product is shipped as 0.2µm filtered product on dry ice.
GENE INFORMATION	
Gene Name	B4GALT1 UDP-Gal:betaGlcNAc beta 1,4- galactosyltransferase, polypeptide 1 [Homo sapiens (human)]
Official Symbol	B4GALT1
Synonyms	B4GALT1; UDP-Gal:betaGlcNAc beta 1,4- galactosyltransferase, polypeptide 1; GGTB2; beta-1,4-galactosyltransferase 1; beta4Gal T1; lactose synthase; beta-1,4-GalTase 1; glycoprotein-4-beta-galactosyltransferase 2; UDP-Gal:beta-GlcNAc beta-1,4-galactosyltransferase 1; UDP-galactose:beta-N-acetylglucosamine beta-1,4-galactosyltransferase 1; GT1; GTB; CDG2D; B4GAL-T1; beta4Gal-T1; MGC50983; DKFZp686N19253;
Gene ID	2683
mRNA Refseq	NM_001497
Protein Refseq	NP_001488
MIM	137060
UniProt ID	P15291

 Tel: 1-631-559-9269 1-516-512-3133

 Email: info@creative-biomart.com  Fax: 1-631-938-8127

 45-1 Ramsey Road, Shirley, NY 11967, USA

SDS-PAGE



 Tel: 1-631-559-9269 1-516-512-3133

 Email: info@creative-biomart.com  Fax: 1-631-938-8127

 45-1 Ramsey Road, Shirley, NY 11967, USA