

Recombinant Bovine B4GALT1 Protein (1-24 aa), GST-tagged

Cat. No. B4GALT1-2409B Lot. No. (See product label)

SPECIFICATION

Product Overview	Recombinant Bovine B4GALT1 Protein (1-24 aa) is produced by Yeast expression system. This protein is fused with a GST tag at the N-terminal. Research Area: Developmental Biology. Protein Description: Partial.
Species	Bovine
Source	Yeast
ProteinLength	1-24 aa
Description	The Golgi complex form catalyzes the production of lactose in the lactating mammary gland and could also be responsible for the synthesis of complex-type N-linked oligosaccharides in many glycoproteins as well as the carbohydrate moieties of glycolipids. The cell surface form functions as a recognition molecule during a variety of cell to cell and cell to matrix interactions, as those occurring during development and egg fertilization, by binding to specific oligosaccharide ligands on opposing cells or in the extracellular matrix.
Form	Tris-based buffer,50% glycerol
Molecular Mass	29.5 kDa
AA Sequence	MKFREPLLGGSAAMPGASLQRACR
Purity	> 90% as determined by SDS-PAGE.

 Tel: 1-631-559-9269 1-516-512-3133

 Email: info@creative-biomart.com  Fax: 1-631-938-8127

 45-1 Ramsey Road, Shirley, NY 11967, USA

Notes	Repeated freezing and thawing is not recommended. Store working aliquots at 4 centigrade for up to one week.
Storage	The shelf life is related to many factors, storage state, buffer ingredients, storage temperature and the stability of the protein itself. Generally, the shelf life of liquid form is 6 months at -20 centigrade/-80 centigrade. The shelf life of lyophilized form is 12 months at -20 centigrade/-80 centigrade.
Concentration	A hardcopy of COA will be sent along with the products. Please refer to it for detailed information.

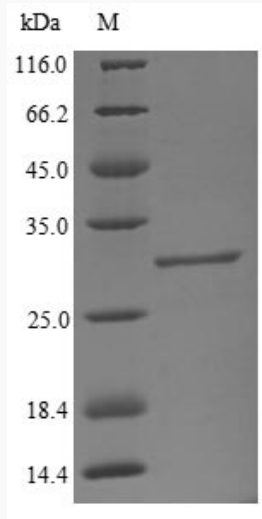
GENE INFORMATION

Gene Name	B4GALT1 beta-1,4-galactosyltransferase 1 [Bos taurus (cattle)]
Official Symbol	B4GALT1
Synonyms	B4GALT1; GGTB2;
Gene ID	281781
mRNA Refseq	NM_177512
Protein Refseq	NP_803478
UniProt ID	P08037

 Tel: 1-631-559-9269 1-516-512-3133

 Email: info@creative-biomart.com  Fax: 1-631-938-8127

 45-1 Ramsey Road, Shirley, NY 11967, USA



(Tris-Glycine gel) Discontinuous SDS-PAGE (reduced) with 5% enrichment gel and 15% separation gel.

 Tel: 1-631-559-9269 1-516-512-3133

 Email: info@creative-biomart.com  Fax: 1-631-938-8127

 45-1 Ramsey Road, Shirley, NY 11967, USA