

Recombinant Bovine beta-1,4-galactosyltransferase 1 Protein, His-tagged

Cat. No. B4GALT1-352B Lot. No. (See product label)

SPECIFICATION

Product Overview

Recombinant Bovine beta-1,4-Galactosyltransferase 1 (B4GalT1) Y289L with N-His tag was expressed in HEK293.

Species

Bovine

Source

HEK293

Description

This gene is one of seven beta-1,4-galactosyltransferase (beta4GalT) genes. They encode type II membrane-bound glycoproteins that appear to have exclusive specificity for the donor substrate UDP-galactose; all transfer galactose in a beta1,4 linkage to similar acceptor sugars: GlcNAc, Glc, and Xyl. Each beta4GalT has a distinct function in the biosynthesis of different glycoconjugates and saccharide structures. As type II membrane proteins, they have an N-terminal hydrophobic signal sequence that directs the protein to the Golgi apparatus and which then remains uncleaved to function as a transmembrane anchor. By sequence similarity, the beta4GalTs form four groups: beta4GalT1 and beta4GalT2, beta4GalT3 and beta4GalT4, beta4GalT5 and beta4GalT6, and beta4GalT7. This gene is unique among the beta4GalT genes because it encodes an enzyme that participates both in glycoconjugate and lactose biosynthesis. For the first activity, the enzyme adds galactose to N-acetylglucosamine residues that are either monosaccharides or the nonreducing ends of glycoprotein carbohydrate chains. The second activity is restricted to lactating mammary tissues where the enzyme forms a heterodimer with alpha-lactalbumin to catalyze $\text{UDP-galactose} + \text{D-glucose} \rightleftharpoons \text{UDP} + \text{lactose}$. The

 Tel: 1-631-559-9269 1-516-512-3133

 Email: info@creative-biomart.com  Fax: 1-631-938-8127

 45-1 Ramsey Road, Shirley, NY 11967, USA

two enzymatic forms result from alternate transcription initiation sites and post-translational processing. Two transcripts, which differ only at the 5' end, with approximate lengths of 4.1 kb and 3.9 kb encode the same protein. The longer transcript encodes the type II membrane-bound, trans-Golgi resident protein involved in glycoconjugate biosynthesis. The shorter transcript encodes a protein which is cleaved to form the soluble lactose synthase.

Tag N-His

Molecular Mass 41 kDa

AA Sequence

HHHHHHHHGRDLRRLPQLVGVHPPLQGSSHGAAAIGQPSELRLRGVAPPPPLQN
SSKPRSRAPSNLDAYSHPGPGPGPGSNLTSAPVPSTTTTSLTACPEESPLLVGPMIL
EFNIPVDLKLVEQQNPKVKLGGRYTPMDCISPHKVAIIIPFRNRQEHLKYWLYLHPIL
QRQLDYGIVINQAGESMFNRAKLLNVGFKEALKDYDYNCFVFSVDLIPMNDHNT
YRCFSQPRHISVAMDKFGFSLPYVQLFGGVSALSQQFLSINGFPNNYWGWWGGED
DDIYNRLAFRGMSSVRPNAVIGKCRMIRHSRDKKNEPNPQRFDRIDRIHTKETMLSDGL
NSLTYMVLEVQRYPLYTKITVDIGTPS

Endotoxin < 1 EU/μg by LAL.

Purity > 90 % by SDS-PAGE

Storage Store it under sterile conditions at -20 to -80 centigrade. It is recommended that the protein be aliquoted for optimal storage. Avoid repeated freeze-thaw cycles.

Concentration 1 mg/mL by BCA

Storage Buffer Sterile 20mM Tris, 100mM NaCl, 10mM TCEP, pH 8.0.

 Tel: 1-631-559-9269 1-516-512-3133

 Email: info@creative-biomart.com  Fax: 1-631-938-8127

 45-1 Ramsey Road, Shirley, NY 11967, USA

GENE INFORMATION

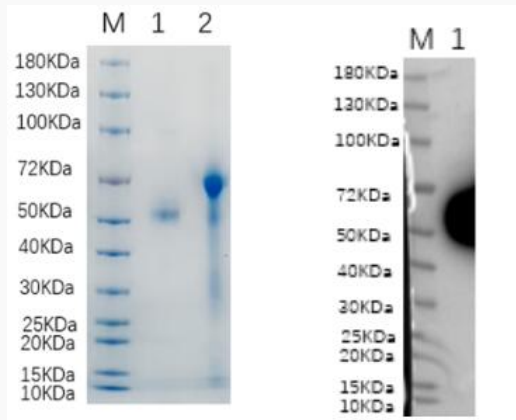
Gene Name	B4GALT1 beta-1,4-galactosyltransferase 1 [Bos taurus (cattle)]
Official Symbol	B4GALT1
Synonyms	B4GALT1; beta-1,4-galactosyltransferase 1; GGTB2; beta-1,4-galactosyltransferase 1; N-acetyllactosamine synthase; UDP-Gal:beta-GlcNAc beta-1,4-galactosyltransferase 1; UDP-galactose:beta-N-acetylglucosamine beta-1,4-galactosyltransferase 1; b4Gal-T1; beta-1,4-GalTase 1; beta-N-acetylglucosaminyl-glycolipid beta-1,4-galactosyltransferase; beta-N-acetylglucosaminylglycopeptide beta-1,4-galactosyltransferase; beta-galactosyltransferase 2 (glycoprotein); beta4Gal-T1; glycoprotein-4-beta-galactosyltransferase 2; lactose synthase A protein; nal synthase; neolactotriaosylceramide beta-1,4-galactosyltransferase; EC 2.4.1.22; EC 2.4.1.275; EC 2.4.1.38; EC 2.4.1.90
Gene ID	281781
mRNA Refseq	NM_177512
Protein Refseq	NP_803478
UniProt ID	P08037

 Tel: 1-631-559-9269 1-516-512-3133

 Email: info@creative-biomart.com  Fax: 1-631-938-8127

 45-1 Ramsey Road, Shirley, NY 11967, USA

Reducing 12 % SDS-PAGE (CBB stained) and WB (Anti-His Mouse Monoclonal antibody) analysis profiles of purified B4GALT1.



1. B4GALT1
2. BSA

 Tel: 1-631-559-9269 1-516-512-3133

 Email: info@creative-biomart.com  Fax: 1-631-938-8127

 45-1 Ramsey Road, Shirley, NY 11967, USA