

Recombinant Human B4GALT1 protein, His-tagged

Cat. No. B4GALT1-646H Lot. No. (See product label)

SPECIFICATION

Product Overview	Recombinant Human B4GALT1 protein(NP_001488.2) (Gly 44-Ser 398) was expressed in HEK293, fused with a polyhistidine tag at the N-terminus.
Species	Human
Source	HEK293
ProteinLength	44-398 aa
Form	Lyophilized from sterile PBS, pH 7.4.
Molecular Mass	The secreted recombinant human B4GALT1 consists of 371 amino acids and predicts a molecular mass of 41.5 kDa. By SDS-PAGE under reducing conditions, rh B4GALT1 migrates as an approximately 45-55 kDa protein due to glycosylation.
Endotoxin	< 1.0 EU per µg of the protein as determined by the LAL method.
Purity	> 92 % as determined by SDS-PAGE
Storage	Store it under sterile conditions at -20°C to -80°C upon receiving. Recommend to aliquot the protein into smaller quantities for optimal storage. Avoid repeated freeze-thaw cycles.
Reconstitution	It is recommended that sterile water be added to the vial to prepare a stock solution of 0.2 ug/ul. Centrifuge the vial at 4°C before opening to recover the entire contents.

 Tel: 1-631-559-9269 1-516-512-3133

 Email: info@creative-biomart.com  Fax: 1-631-938-8127

 45-1 Ramsey Road, Shirley, NY 11967, USA

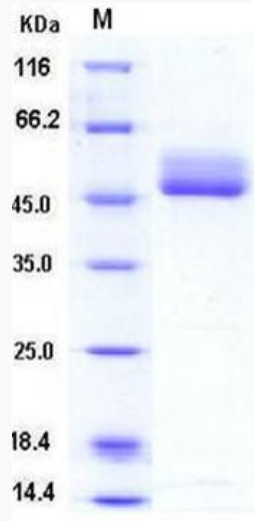
protein Refseq-Weblink	http://www.ncbi.nlm.nih.gov/protein/NP_001488.2
Unit ID	P15291
Unit ID-Weblink	https://www.uniprot.org/uniprotkb/P15291
GENE INFORMATION	
Gene Name	B4GALT1 UDP-Gal:betaGlcNAc beta 1,4- galactosyltransferase, polypeptide 1 [Homo sapiens]
Official Symbol	B4GALT1
Synonyms	B4GALT1; UDP-Gal:betaGlcNAc beta 1,4- galactosyltransferase, polypeptide 1; GGTB2; beta-1,4-galactosyltransferase 1; beta4Gal T1; lactose synthase; beta-1,4-GalTase 1; glycoprotein-4-beta-galactosyltransferase 2; UDP-Gal:beta-GlcNAc beta-1,4-galactosyltransferase 1; UDP-galactose:beta-N-acetylglucosamine beta-1,4-galactosyltransferase 1; GT1; GTB; CDG2D; B4GAL-T1; beta4Gal-T1; MGC50983; DKFZp686N19253;
Gene ID	2683
mRNA Refseq	NM_001497
protein Refseq	NP_001488
MIM	137060

 Tel: 1-631-559-9269 1-516-512-3133

 Email: info@creative-biomart.com  Fax: 1-631-938-8127

 45-1 Ramsey Road, Shirley, NY 11967, USA

SDS-PAGE



 Tel: 1-631-559-9269 1-516-512-3133

 Email: info@creative-biomart.com  Fax: 1-631-938-8127

 45-1 Ramsey Road, Shirley, NY 11967, USA