

Recombinant Human B4GALT6 protein, GST-tagged

Cat. No. B4GALT6-33H Lot. No. (See product label)

SPECIFICATION

Product Overview	Recombinant Human B4GALT6(1 a.a. - 343 a.a.) fused with GST tag at N-terminal was expressed in Wheat Germ.
Species	Human
Source	Wheat Germ
ProteinLength	1-343 a.a.
Form	50 mM Tris-HCl, 10 mM reduced Glutathione, pH=8.0 in the elution buffer.
Molecular Mass	66.5 kDa
AA Sequence	MSVLRRMMRVSNRSLLAFFFFSLSSSCLYFIYVAPGIANTYLFMVQARGIMLRENVK TIGHMIRLYTNKNSTLNGTDYPEGNSSDYLVQTTTYLPENFTYSPYLPCEKLPYM RGFLNVNVSEVSFDEIHQLFSKDLIDIEPGGHWRPKDCKPRWKTGTQPFNRAMLFNV GFKEAMKDSVWDCVIFHDVDHLPENDRNYGCGEMPRHFAAKLDKMYILPYKEFF GGVSGLTVEQFRKINGFPNAFWGWGGEDDDLWNRVHYAGYNVTRPEGDLGKYKSI PHHHRGEVQFLGRYKLLRYSKERQYIDGLNLIYRPKILVDRLYTNISVNLMPELAPIE DY
Applications	Enzyme-linked Immunoabsorbent Assay; Western Blot (Recombinant protein); Antibody Production; Protein Array
Notes	Best use within three months from the date of receipt of this protein.

 Tel: 1-631-559-9269 1-516-512-3133

 Email: info@creative-biomart.com  Fax: 1-631-938-8127

 45-1 Ramsey Road, Shirley, NY 11967, USA

Storage Store at -80 centigrade. Aliquot to avoid repeated freezing and thawing.

GENE INFORMATION

Gene Name B4GALT6 UDP-Gal:betaGlcNAc beta 1,4- galactosyltransferase, polypeptide 6 [Homo sapiens]

Official Symbol B4GALT6

Synonyms B4GALT6; UDP-Gal:betaGlcNAc beta 1,4- galactosyltransferase, polypeptide 6; beta-1,4-galactosyltransferase 6; beta4GalT VI; UDP Gal:glucosylceramide beta 1; 4 galactosyltransferase; beta4GalT-VI; beta-1,4-GalTase 6; UDP-Gal:beta-GlcNAc beta-1,4-galactosyltransferase 6; UDP-Gal:glucosylceramide beta-1,4-galactosyltransferase; UDP-galactose:beta-N-acetylglucosamine beta-1,4-galactosyltransferase 6; B4Gal-T6; beta4Gal-T6;

Gene ID 9331

mRNA Refseq NM_004775

Protein Refseq NP_004766

MIM 604017

UniProt ID Q9UBX8

Chromosome Location 18q11

Pathway Asparagine N-linked glycosylation, organism-specific biosystem; Lactosylceramide biosynthesis, organism-specific biosystem; Lactosylceramide biosynthesis, conserved

 Tel: 1-631-559-9269 1-516-512-3133

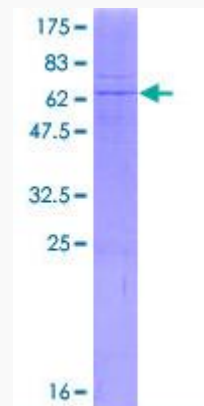
 Email: info@creative-biomart.com  Fax: 1-631-938-8127

 45-1 Ramsey Road, Shirley, NY 11967, USA

biosystem; Metabolic pathways, organism-specific biosystem; Metabolism of proteins, organism-specific biosystem; N-Glycan antennae elongation, organism-specific biosystem; N-glycan antennae elongation in the medial/trans-Golgi, organism-specific biosystem;

Function

UDP-galactose:glucosylceramide beta-1,4-galactosyltransferase activity; galactosyltransferase activity; metal ion binding; transferase activity, transferring glycosyl groups;



Tel: 1-631-559-9269 1-516-512-3133

Email: info@creative-biomart.com Fax: 1-631-938-8127

45-1 Ramsey Road, Shirley, NY 11967, USA