

## Recombinant Mouse B4galt1 overexpression lysate

Cat. No. B4galt1-07HCL    Lot. No. (See product label)

### SPECIFICATION

**Product Overview**

Recombinant mouse B4galt1 HEK293T cell transient overexpression lysate (as WB positive control) with a C-Myc/DDK tag was expressed in HEK293T.

Preparation: HEK293T cells in 10-cm dishes were transiently transfected. Transfected cells were cultured for 48hrs before collection. The cells were lysed in modified RIPA buffer (25mM Tris-HCl pH7.6, 150mM NaCl, 1% NP-40, 1mM EDTA, 1xProteinase inhibitor cocktail mix, 1mM PMSF and 1mM Na<sub>3</sub>VO<sub>4</sub>), and then centrifuged to clarify the lysate. Protein concentration was measured by BCA kit. To facilitate transportation and protein, the products are supplied as lyophilized proteins.

Components: 1 vial of 20 µg lyophilized gene specific transient over-expression cell lysate

**Species**                      Mouse

**Source**                        HEK293

**Description**

This gene encodes two distinct enzyme isoforms, a long membrane-bound form and a short soluble form. These alternate isoforms are thought to be produced through alternative nested transcription initiation and different in-frame start codon usage. These enzymes catalyze the transfer of galactose to acceptor sugars, such as N-acetylglucosamine and glucose. The long form of this enzyme is localized to the trans-Golgi membrane and is involved in glycoconjugate biosynthesis. The short form functions in lactose biosynthesis through formation of a heterodimer with alpha-lactalbumin.

 Tel: 1-631-559-9269    1-516-512-3133

 Email: [info@creative-biomart.com](mailto:info@creative-biomart.com)     Fax: 1-631-938-8127

 45-1 Ramsey Road, Shirley, NY 11967, USA

<b>Molecular Mass</b>	44.4 kDa
<b>Stability</b>	Lysate samples are stable for 12 months from date of receipt when stored at -20 centigrade. Avoid repeated freeze-thaw cycles after reconstitution.
<b>Storage</b>	Upon receiving, store the sample at -20 centigrade.
<b>Reconstitution</b>	Lysate samples can be reconstituted with SDS Sample Buffer. Prior to SDS-PAGE fractionation, boil the lysate for 5 minutes.
<b>Shipping</b>	The lysate can be shipped at ambient temperature.
<b>GENE INFORMATION</b>	
<b>Gene Name</b>	B4galt1 UDP-Gal:betaGlcNAc beta 1,4- galactosyltransferase, polypeptide 1 [ Mus musculus (house mouse) ]
<b>Official Symbol</b>	B4galt1
<b>Synonyms</b>	B4galt1; UDP-Gal:betaGlcNAc beta 1,4- galactosyltransferase, polypeptide 1; Ga; GalT; Ggtb; Ggtb2; b4Gal-T1; B-1,4-GalT; B-1,4-GalT1; beta4Gal-T1; beta-1,4-GalT; beta-1,4-GalT1; beta-1,4-galactosyltransferase 1; N-acetyllactosamine synthase; UDP-galactose:beta-N-acetylglucosamine beta-1,4-galactosyltransferase 1; b1,4-Galactosyltransferase I; beta-1,4-GalTase 1; beta-N-acetylglucosaminyl-glycolipid beta-1,4-galactosyltransferase; beta-N-acetylglucosaminylglycopeptide beta-1,4-galactosyltransferase; galactosyltransferase 2 beta 1, 4; glycoprotein galactosyltransferase beta 1, 4; lactose synthase A protein; nal synthase; neolactotriaosylceramide beta-1,4-galactosyltransferase; EC 2.4.1.22; EC 2.4.1.275; EC 2.4.1.38; EC 2.4.1.90
<b>Gene ID</b>	14595

 Tel: 1-631-559-9269 1-516-512-3133

 Email: [info@creative-biomart.com](mailto:info@creative-biomart.com)  Fax: 1-631-938-8127

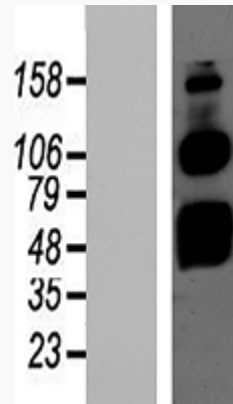
 45-1 Ramsey Road, Shirley, NY 11967, USA

mRNA Refseq [NM\\_022305](#)

Protein Refseq [NP\\_071641](#)

UniProt ID [P15535](#)

SDS-PAGE



 Tel: 1-631-559-9269 1-516-512-3133

 Email: [info@creative-biomart.com](mailto:info@creative-biomart.com)  Fax: 1-631-938-8127

 45-1 Ramsey Road, Shirley, NY 11967, USA