

Recombinant Mouse B4galt1 Protein, Myc/DDK-tagged

Cat. No. B4galt1-1806M Lot. No. (See product label)

SPECIFICATION

Product Overview	Purified recombinant protein of Mouse UDP-Gal:betaGlcNAc beta 1,4-galactosyltransferase, polypeptide 1 (B4galt1), full length, with C-terminal MYC/DDK tag, expressed in HEK293T cells.
Species	Mouse
Source	HEK293
Description	This gene encodes two distinct enzyme isoforms, a long membrane-bound form and a short soluble form. These alternate isoforms are thought to be produced through alternative nested transcription initiation and different in-frame start codon usage. These enzymes catalyze the transfer of galactose to acceptor sugars, such as N-acetylglucosamine and glucose. The long form of this enzyme is localized to the trans-Golgi membrane and is involved in glycoconjugate biosynthesis. The short form functions in lactose biosynthesis through formation of a heterodimer with alpha-lactalbumin.
Molecular Mass	44.4 kDa
Purity	> 80% as determined by SDS-PAGE and Coomassie blue staining
Stability	Stable for 12 months from the date of receipt of the product under proper storage and handling conditions. Avoid repeated freeze-thaw cycles.
Storage	Store at -80 centigrade after receiving vials.

 Tel: 1-631-559-9269 1-516-512-3133

 Email: info@creative-biomart.com  Fax: 1-631-938-8127

 45-1 Ramsey Road, Shirley, NY 11967, USA

Concentration	>50 µg/mL as determined by microplate BCA method
Storage Buffer	25 mM Tris-HCl, pH 7.3, 100 mM glycine, 10% glycerol
Full Length	Full L.
GENE INFORMATION	
Gene Name	B4galt1 UDP-Gal:betaGlcNAc beta 1,4- galactosyltransferase, polypeptide 1 [<i>Mus musculus</i> (house mouse)]
Official Symbol	B4galt1
Synonyms	B4GALT1; UDP-Gal:betaGlcNAc beta 1,4- galactosyltransferase, polypeptide 1; beta-1,4-galactosyltransferase 1; b4Gal-T1; B-1,4-GalT1; beta4Gal-T1; beta-1,4-GalT; beta-1,4-GalT1; beta-1,4-GalTase 1; b1,4-Galactosyltransferase I; beta 1,4-Galactosyltransferase I; galactosyltransferase 2 beta 1, 4; beta-1,4-galactosyltransferase (short form); glycoprotein galactosyltransferase beta 1, 4; UDP-Gal:beta-GlcNAc beta-1,4-galactosyltransferase 1; UDP-Gal:betaGlcNAc beta 1,4-galactosyltransferase, polypeptide 1; UDP-galactose:beta-N-acetylglucosamine beta-1,4-galactosyltransferase 1; GalT; Ggtb; Ggtb2; AA407245; B-1,4-GalT
Gene ID	14595
mRNA Refseq	NM_022305
Protein Refseq	NP_071641
UniProt ID	P15535

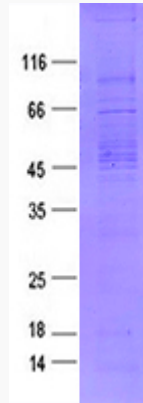
 Tel: 1-631-559-9269 1-516-512-3133

 Email: info@creative-biomart.com  Fax: 1-631-938-8127

 45-1 Ramsey Road, Shirley, NY 11967, USA



SDS-PAGE



Tel: 1-631-559-9269 1-516-512-3133

Email: info@creative-biomart.com Fax: 1-631-938-8127

45-1 Ramsey Road, Shirley, NY 11967, USA