

## Recombinant Mouse B4galt1 overexpression lysate

Cat. No. B4galt1-25HCL Lot. No. (See product label)

### SPECIFICATION

#### Product Overview

Transient overexpression lysate of Mouse UDP-Gal:betaGlcNAc beta 1,4-galactosyltransferase, polypeptide 1 (B4galt1) with a C-Myc/DDK tag was expressed in HEK293T.

Preparation: HEK293T cells in 10-cm dishes were transiently transfected. Transfected cells were cultured for 48hrs before collection. The cells were lysed in modified RIPA buffer (25mM Tris-HCl pH7.6, 150mM NaCl, 1% NP-40, 1mM EDTA, 1xProteinase inhibitor cocktail mix, 1mM PMSF and 1mM Na3VO4), and then centrifuged to clarify the lysate. Protein concentration was measured by BCA kit. Cell lysates were aliquoted and stored at -20 centigrade before shipping.

Components:

1 vial of 100 µg gene specific transient over-expression cell lysate in RIPA buffer

1 vial of 100 µg empty vector transfected control cell lysate in RIPA buffer

1 vial of 250 µL 2xSDS Sample Buffer (4% SDS, 125mM Tris-HCl pH6.8, 10% Glycerol, 0.002% Bromphenol blue, 100mM DTT)

#### Species

Mouse

#### Source


HEK293

#### Description

This gene encodes two distinct enzyme isoforms, a long membrane-bound form and a short soluble form. These alternate isoforms are thought to be produced through alternative nested transcription initiation and different in-frame start codon usage. These enzymes catalyze the transfer of galactose to acceptor sugars, such as N-acetylglucosamine and glucose. The long form of this enzyme is localized to the

 Tel: 1-631-559-9269 1-516-512-3133

 Email: [info@creative-biomart.com](mailto:info@creative-biomart.com)  Fax: 1-631-938-8127

 45-1 Ramsey Road, Shirley, NY 11967, USA

trans-Golgi membrane and is involved in glycoconjugate biosynthesis. The short form functions in lactose biosynthesis through formation of a heterodimer with alpha-lactalbumin.

**Molecular Mass** 44.4 kDa

**Stability** Avoid repeated freeze-thaw cycles. Lysate samples are stable for 12 months from date of receipt when stored at -20 centigrade.

**Storage** Upon receiving, store the sample at -20 centigrade.

**Reconstitution** Lysate samples can be diluted with 2xSDS Sample Buffer provided. After dilution, the protein sample should be aliquoted and stored at -20 centigrade for long term storage.

**Shipping** The lysate is shipped with dry ice.

## GENE INFORMATION

**Gene Name** B4galt1 UDP-Gal:betaGlcNAc beta 1,4- galactosyltransferase, polypeptide 1 [ *Mus musculus* (house mouse) ]

**Official Symbol** B4galt1

**Synonyms** B4galt1; UDP-Gal:betaGlcNAc beta 1,4- galactosyltransferase, polypeptide 1; Ga; GalT; Ggtb; Ggtb2; b4Gal-T1; B-1,4-GalT; B-1,4-GalT1; beta4Gal-T1; beta-1,4-GalT; beta-1,4-GalT1; beta-1,4-galactosyltransferase 1; N-acetyllactosamine synthase; UDP-galactose:beta-N-acetylglucosamine beta-1,4-galactosyltransferase 1; b1,4-Galactosyltransferase I; beta-1,4-GalTase 1; beta-N-acetylglucosaminyl-glycolipid beta-1,4-galactosyltransferase; beta-N-acetylglucosaminylglycopeptide beta-1,4-galactosyltransferase; galactosyltransferase 2 beta 1, 4; glycoprotein

 Tel: 1-631-559-9269 1-516-512-3133

 Email: [info@creative-biomart.com](mailto:info@creative-biomart.com)  Fax: 1-631-938-8127

 45-1 Ramsey Road, Shirley, NY 11967, USA

galactosyltransferase beta 1, 4; lactose synthase A protein; nal synthase;  
neolactotriaosylceramide beta-1,4-galactosyltransferase; EC 2.4.1.22; EC 2.4.1.275;  
EC 2.4.1.38; EC 2.4.1.90

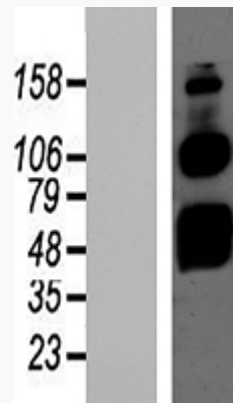
Gene ID [14595](#)

mRNA Refseq [NM\\_022305](#)

Protein Refseq [NP\\_071641](#)

UniProt ID [P15535](#)

SDS-PAGE



Tel: 1-631-559-9269 1-516-512-3133

Email: [info@creative-biomart.com](mailto:info@creative-biomart.com) Fax: 1-631-938-8127

45-1 Ramsey Road, Shirley, NY 11967, USA