

Recombinant Mouse B4galt2 overexpression lysate

Cat. No. B4galt2-27HCL **Lot. No.** (See product label)

SPECIFICATION

Product Overview

Transient overexpression lysate of Mouse UDP-Gal:betaGlcNAc beta 1,4-galactosyltransferase, polypeptide 2 (B4galt2) with a C-Myc/DDK tag was expressed in HEK293T.

Preparation: HEK293T cells in 10-cm dishes were transiently transfected. Transfected cells were cultured for 48hrs before collection. The cells were lysed in modified RIPA buffer (25mM Tris-HCl pH7.6, 150mM NaCl, 1% NP-40, 1mM EDTA, 1xProteinase inhibitor cocktail mix, 1mM PMSF and 1mM Na3VO4), and then centrifuged to clarify the lysate. Protein concentration was measured by BCA kit. Cell lysates were aliquoted and stored at -20 centigrade before shipping.

Components:

1 vial of 100 µg gene specific transient over-expression cell lysate in RIPA buffer

1 vial of 100 µg empty vector transfected control cell lysate in RIPA buffer

1 vial of 250 µL 2xSDS Sample Buffer (4% SDS, 125mM Tris-HCl pH6.8, 10% Glycerol, 0.002% Bromphenol blue, 100mM DTT)

Species

Mouse

Source

HEK293

Description

Responsible for the synthesis of complex-type N-linked oligosaccharides in many glycoproteins as well as the carbohydrate moieties of glycolipids. Can produce lactose.

Molecular Mass

42.4 kDa

 Tel: 1-631-559-9269 1-516-512-3133

 Email: info@creative-biomart.com  Fax: 1-631-938-8127

 45-1 Ramsey Road, Shirley, NY 11967, USA

Stability	Avoid repeated freeze-thaw cycles. Lysate samples are stable for 12 months from date of receipt when stored at -20 centigrade.
Storage	Upon receiving, store the sample at -20 centigrade.
Reconstitution	Lysate samples can be diluted with 2xSDS Sample Buffer provided. After dilution, the protein sample should be aliquoted and stored at -20 centigrade for long term storage.
Shipping	The lysate is shipped with dry ice.

GENE INFORMATION

Gene Name	B4galt2 UDP-Gal:betaGlcNAc beta 1,4- galactosyltransferase, polypeptide 2 [<i>Mus musculus</i> (house mouse)]
Official Symbol	B4galt2
Synonyms	B4galt2; UDP-Gal:betaGlcNAc beta 1,4- galactosyltransferase, polypeptide 2; Ggtb2; beta-1,4-galactosyltransferase 2; N-acetyllactosamine synthase; UDP-Gal:beta-GlcNAc beta-1,4-galactosyltransferase 2; UDP-galactose:beta-N-acetylglucosamine beta-1,4-galactosyltransferase 2; b4Gal-T2; beta-1,4-GalTase 2; beta-1,4-galactosyltransferase II; beta-N-acetylglucosaminyl-glycolipid beta-1,4-galactosyltransferase; beta-N-acetylglucosaminylglycopeptide beta-1,4-galactosyltransferase; beta4Gal-T2; lactose synthase A protein; nal synthase; EC 2.4.1.22; EC 2.4.1.38; EC 2.4.1.90
Gene ID	53418
mRNA Refseq	NM_017377

 Tel: 1-631-559-9269 1-516-512-3133

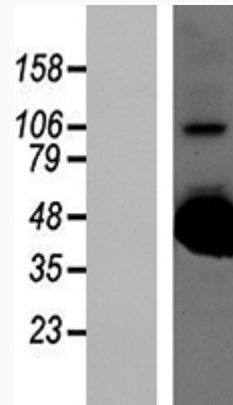
 Email: info@creative-biomart.com  Fax: 1-631-938-8127

 45-1 Ramsey Road, Shirley, NY 11967, USA

Protein Refseq NP_059073

UniProt ID Q9Z2Y2

SDS-PAGE



 Tel: 1-631-559-9269 1-516-512-3133

 Email: info@creative-biomart.com  Fax: 1-631-938-8127

 45-1 Ramsey Road, Shirley, NY 11967, USA