

## Recombinant Mouse B4galt6 overexpression lysate

Cat. No. B4galt6-03HCL    Lot. No. (See product label)

### SPECIFICATION

<b>Product Overview</b>	<p>Recombinant mouse B4galt6 HEK293T cell transient overexpression lysate (as WB positive control) with a C-Myc/DDK tag was expressed in HEK293T.</p> <p>Preparation: HEK293T cells in 10-cm dishes were transiently transfected. Transfected cells were cultured for 48hrs before collection. The cells were lysed in modified RIPA buffer (25mM Tris-HCl pH7.6, 150mM NaCl, 1% NP-40, 1mM EDTA, 1xProteinase inhibitor cocktail mix, 1mM PMSF and 1mM Na3VO4), and then centrifuged to clarify the lysate. Protein concentration was measured by BCA kit. To facilitate transportation and protein, the products are supplied as lyophilized proteins.</p> <p>Components: 1 vial of 20 µg lyophilized gene specific transient over-expression cell lysate</p>
<b>Species</b>	Mouse
<b>Source</b>	HEK293
<b>Description</b>	<p>Catalyzes the synthesis of lactosylceramide (LacCer) via the transfer of galactose from UDP-galactose to glucosylceramide (GlcCer). LacCer is the starting point in the biosynthesis of all gangliosides (membrane-bound glycosphingolipids) which play pivotal roles in the CNS including neuronal maturation and axonal and myelin formation.</p>
<b>Molecular Mass</b>	44.8 kDa
<b>Stability</b>	Lysate samples are stable for 12 months from date of receipt when stored at -20

 Tel: 1-631-559-9269    1-516-512-3133

 Email: [info@creative-biomart.com](mailto:info@creative-biomart.com)     Fax: 1-631-938-8127

 45-1 Ramsey Road, Shirley, NY 11967, USA

centigrade. Avoid repeated freeze-thaw cycles after reconstitution.

**Storage** Upon receiving, store the sample at -20 centigrade.

**Reconstitution** Lysate samples can be reconstituted with SDS Sample Buffer. Prior to SDS-PAGE fractionation, boil the lysate for 5 minutes.

**Shipping** The lysate can be shipped at ambient temperature.

## GENE INFORMATION

**Gene Name** [B4galt6 UDP-Gal:betaGlcNAc beta 1,4-galactosyltransferase, polypeptide 6 \[ Mus musculus \(house mouse\) \]](#)

**Official Symbol** [B4galt6](#)

**Synonyms** B4galt6; UDP-Gal:betaGlcNAc beta 1,4-galactosyltransferase, polypeptide 6; AA536803; AU022389; beta-1,4-galactosyltransferase 6; Names; UDP-Gal:beta-GlcNAc beta-1,4-galactosyltransferase 6; UDP-Gal:glucosylceramide beta-1,4-galactosyltransferase; UDP-galactose:beta-N-acetylglucosamine beta-1,4-galactosyltransferase 6; b4Gal-T6; beta-1, 4-galactosyltransferase VI; beta-1,4-GalTase 6; beta4Gal-T6; glucosylceramide beta-1,4-galactosyltransferase; lacCer synthase; lactosylceramide synthase; EC 2.4.1.274

**Gene ID** [56386](#)

**mRNA Refseq** [NM\\_019737](#)

**Protein Refseq** [NP\\_062711](#)

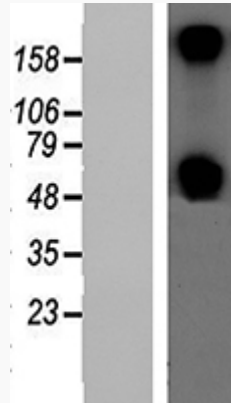
**UniProt ID** [Q9WVK5](#)

 Tel: 1-631-559-9269 1-516-512-3133

 Email: [info@creative-biomart.com](mailto:info@creative-biomart.com)  Fax: 1-631-938-8127

 45-1 Ramsey Road, Shirley, NY 11967, USA

SDS-PAGE



 Tel: 1-631-559-9269 1-516-512-3133

 Email: [info@creative-biomart.com](mailto:info@creative-biomart.com)  Fax: 1-631-938-8127

 45-1 Ramsey Road, Shirley, NY 11967, USA