

Recombinant Mouse B4galt6 Protein, Myc/DDK-tagged

Cat. No. B4galt6-1811M Lot. No. (See product label)

SPECIFICATION

Product Overview	Purified recombinant protein of Mouse UDP-Gal:betaGlcNAc beta 1,4-galactosyltransferase, polypeptide 6 (B4galt6), full length, with C-terminal MYC/DDK tag, expressed in HEK293T cells.
Species	Mouse
Source	HEK293
Description	Catalyzes the synthesis of lactosylceramide (LacCer) via the transfer of galactose from UDP-galactose to glucosylceramide (GlcCer). LacCer is the starting point in the biosynthesis of all gangliosides (membrane-bound glycosphingolipids) which play pivotal roles in the CNS including neuronal maturation and axonal and myelin formation.
Molecular Mass	44.8 kDa
Purity	> 80% as determined by SDS-PAGE and Coomassie blue staining
Stability	Stable for 12 months from the date of receipt of the product under proper storage and handling conditions. Avoid repeated freeze-thaw cycles.
Storage	Store at -80 centigrade after receiving vials.
Concentration	>50 µg/mL as determined by microplate BCA method

 Tel: 1-631-559-9269 1-516-512-3133

 Email: info@creative-biomart.com  Fax: 1-631-938-8127

 45-1 Ramsey Road, Shirley, NY 11967, USA

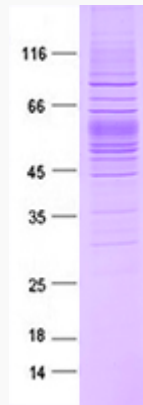
Storage Buffer	25 mM Tris-HCl, pH 7.3, 100 mM glycine, 10% glycerol
Full Length	Full L.
GENE INFORMATION	
Gene Name	B4galt6 UDP-Gal:betaGlcNAc beta 1,4-galactosyltransferase, polypeptide 6 [<i>Mus musculus</i> (house mouse)]
Official Symbol	B4galt6
Synonyms	B4GALT6; UDP-Gal:betaGlcNAc beta 1,4-galactosyltransferase, polypeptide 6; beta-1,4-galactosyltransferase 6; b4Gal-T6; beta4Gal-T6; beta-1,4-GalTase 6; beta-1, 4-galactosyltransferase VI; UDP-Gal:beta-GlcNAc beta-1,4-galactosyltransferase 6; UDP-Gal:glucosylceramide beta-1,4-galactosyltransferase; UDP-galactose:beta-N-acetylglucosamine beta-1,4-galactosyltransferase 6; AA536803; AU022389
Gene ID	56386
mRNA Refseq	NM_019737
Protein Refseq	NP_062711
UniProt ID	Q9WVK5

 Tel: 1-631-559-9269 1-516-512-3133

 Email: info@creative-biomart.com  Fax: 1-631-938-8127

 45-1 Ramsey Road, Shirley, NY 11967, USA

SDS-PAGE



 Tel: 1-631-559-9269 1-516-512-3133

 Email: info@creative-biomart.com  Fax: 1-631-938-8127

 45-1 Ramsey Road, Shirley, NY 11967, USA