

## Recombinant Mouse B4galt6 overexpression lysate

Cat. No. B4galt6-21HCL Lot. No. (See product label)

### SPECIFICATION

#### Product Overview

Transient overexpression lysate of Mouse UDP-Gal:betaGlcNAc beta 1,4-galactosyltransferase, polypeptide 6 (B4galt6) with a C-Myc/DDK tag was expressed in HEK293T.

Preparation: HEK293T cells in 10-cm dishes were transiently transfected. Transfected cells were cultured for 48hrs before collection. The cells were lysed in modified RIPA buffer (25mM Tris-HCl pH7.6, 150mM NaCl, 1% NP-40, 1mM EDTA, 1xProteinase inhibitor cocktail mix, 1mM PMSF and 1mM Na3VO4), and then centrifuged to clarify the lysate. Protein concentration was measured by BCA kit. Cell lysates were aliquoted and stored at -20 centigrade before shipping.

Components:

1 vial of 100 µg gene specific transient over-expression cell lysate in RIPA buffer

1 vial of 100 µg empty vector transfected control cell lysate in RIPA buffer

1 vial of 250 µL 2xSDS Sample Buffer (4% SDS, 125mM Tris-HCl pH6.8, 10% Glycerol, 0.002% Bromphenol blue, 100mM DTT)

#### Species

Mouse

#### Source


HEK293

#### Description

Catalyzes the synthesis of lactosylceramide (LacCer) via the transfer of galactose from UDP-galactose to glucosylceramide (GlcCer). LacCer is the starting point in the biosynthesis of all gangliosides (membrane-bound glycosphingolipids) which play pivotal roles in the CNS including neuronal maturation and axonal and myelin formation.

 Tel: 1-631-559-9269 1-516-512-3133

 Email: [info@creative-biomart.com](mailto:info@creative-biomart.com)  Fax: 1-631-938-8127

 45-1 Ramsey Road, Shirley, NY 11967, USA

|                         |  |
|-------------------------|--|
| <b>Molecular Mass</b>   | 44.8 kDa   |
| <b>Stability</b>        | Avoid repeated freeze-thaw cycles. Lysate samples are stable for 12 months from date of receipt when stored at -20 centigrade.   |
| <b>Storage</b>          | Upon receiving, store the sample at -20 centigrade.  |
| <b>Reconstitution</b>   | Lysate samples can be diluted with 2xSDS Sample Buffer provided. After dilution, the protein sample should be aliquoted and stored at -20 centigrade for long term storage.  |
| <b>Shipping</b>         | The lysate is shipped with dry ice.  |
| <b>GENE INFORMATION</b> |  |
| <b>Gene Name</b>        | B4galt6 UDP-Gal:betaGlcNAc beta 1,4-galactosyltransferase, polypeptide 6 [ <i>Mus musculus</i> (house mouse) ]   |
| <b>Official Symbol</b>  | B4galt6  |
| <b>Synonyms</b>         | B4galt6; UDP-Gal:betaGlcNAc beta 1,4-galactosyltransferase, polypeptide 6; AA536803; AU022389; beta-1,4-galactosyltransferase 6; Names; UDP-Gal:beta-GlcNAc beta-1,4-galactosyltransferase 6; UDP-Gal:glucosylceramide beta-1,4-galactosyltransferase; UDP-galactose:beta-N-acetylglucosamine beta-1,4-galactosyltransferase 6; b4Gal-T6; beta-1, 4-galactosyltransferase VI; beta-1,4-GalTase 6; beta4Gal-T6; glucosylceramide beta-1,4-galactosyltransferase; lacCer synthase; lactosylceramide synthase; EC 2.4.1.274 |
| <b>Gene ID</b>          | 56386  |
| <b>mRNA Refseq</b>      | NM_019737  |

 Tel: 1-631-559-9269 1-516-512-3133

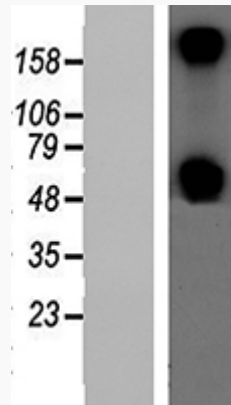
 Email: [info@creative-biomart.com](mailto:info@creative-biomart.com)  Fax: 1-631-938-8127

 45-1 Ramsey Road, Shirley, NY 11967, USA

Protein Refseq NP\_062711

UniProt ID Q9WVK5

SDS-PAGE



 Tel: 1-631-559-9269 1-516-512-3133

 Email: [info@creative-biomart.com](mailto:info@creative-biomart.com)  Fax: 1-631-938-8127

 45-1 Ramsey Road, Shirley, NY 11967, USA