

## Recombinant Human B9D1 Protein, GST-tagged

Cat. No. B9D1-2651H Lot. No. (See product label)

### SPECIFICATION

<b>Product Overview</b>	Human EPPB9 full-length ORF ( AAH02944.1, 1 a.a. - 153 a.a.) recombinant protein with GST-tag at N-terminal.
<b>Species</b>	Human
<b>Source</b>	Wheat Germ
<b>Description</b>	This gene encodes a B9 domain-containing protein, one of several that are involved in ciliogenesis. Alterations in expression of this gene have been found in a family with Meckel syndrome. Meckel syndrome has been associated with at least six different genes. This gene is located within the Smith-Magenis syndrome region on chromosome 17. [provided by RefSeq, Mar 2016]
<b>Molecular Mass</b>	43.3 kDa
<b>AA Sequence</b>	MATASPSVFLLMVNGQVESAQFPEYDDLYCKYCFVYGQDWAPTAGLEEGISQITSK SQDVRQALVWNFPIDVTFKSTNPYGWQIVLSVYGPDVFGNDVVRGYGAVHVPFSP GRHKRTIPMFVPESTSKLQKFTSLCLVASSDLQAAPPTEDK
<b>Applications</b>	Enzyme-linked Immunoabsorbent Assay Western Blot (Recombinant protein) Antibody Production Protein Array
<b>Notes</b>	Best use within three months from the date of receipt of this protein.

 Tel: 1-631-559-9269 1-516-512-3133

 Email: [info@creative-biomart.com](mailto:info@creative-biomart.com)  Fax: 1-631-938-8127

 45-1 Ramsey Road, Shirley, NY 11967, USA

**Storage** Store at -80 centigrade. Aliquot to avoid repeated freezing and thawing.

**Storage Buffer** 50 mM Tris-HCl, 10 mM reduced Glutathione, pH=8.0 in the elution buffer.

## GENE INFORMATION

**Gene Name** [B9D1 B9 domain containing 1 \[ Homo sapiens \(human\) \]](#)

**Official Symbol** [B9D1](#)

**Synonyms** B9D1; B9 domain containing 1; B9 Domain Containing 1; Endothelial Precursor Protein B9; MKS1-Related Protein 1; B9 Protein Domain 1; MKSR1; B9 Domain-Containing Protein 1; JBTS27; EPPB9; MKS9; B9; B9 domain-containing protein 1; B9 protein domain 1; MKS1-related protein 1; endothelial precursor protein B9

**Gene ID** [27077](#)

**mRNA Refseq** [NM\\_001243473](#)

**Protein Refseq** [NP\\_001230402](#)

**MIM** [614144](#)

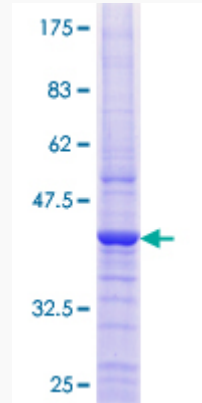
**UniProt ID** [Q9UPM9](#)

 Tel: 1-631-559-9269 1-516-512-3133

 Email: [info@creative-biomart.com](mailto:info@creative-biomart.com)  Fax: 1-631-938-8127

 45-1 Ramsey Road, Shirley, NY 11967, USA

**Quality Control  
Testing**



12.5% SDS-PAGE Stained with Coomassie Blue.

 Tel: 1-631-559-9269 1-516-512-3133

 Email: [info@creative-biomart.com](mailto:info@creative-biomart.com)  Fax: 1-631-938-8127

 45-1 Ramsey Road, Shirley, NY 11967, USA