

Recombinant Human BABAM1 Protein, Myc/DDK-tagged, C13 and N15-labeled

Cat. No. BABAM1-5182H **Lot. No.** (See product label)

SPECIFICATION

Product Overview

C19orf62 MS Standard C13 and N15-labeled recombinant protein (NP_001028721) with a C-terminal MYC/DDK tag, was expressed in HEK293 cells.

Species

Human

Source

HEK293

Description

Component of the BRCA1-A complex, a complex that specifically recognizes 'Lys-63'-linked ubiquitinated histones H2A and H2AX at DNA lesions sites, leading to target the BRCA1-BARD1 heterodimer to sites of DNA damage at double-strand breaks (DSBs). The BRCA1-A complex also possesses deubiquitinase activity that specifically removes 'Lys-63'-linked ubiquitin on histones H2A and H2AX. In the BRCA1-A complex, it is required for the complex integrity and its localization at DSBs. Component of the BRISC complex, a multiprotein complex that specifically cleaves 'Lys-63'-linked ubiquitin in various substrates. In these 2 complexes, it is probably required to maintain the stability of BABAM2 and help the 'Lys-63'-linked deubiquitinase activity mediated by BRCC3/BRCC36 component. The BRISC complex is required for normal mitotic spindle assembly and microtubule attachment to kinetochores via its role in deubiquitinating NUMA1. Plays a role in interferon signaling via its role in the deubiquitination of the interferon receptor IFNAR1; deubiquitination increases IFNAR1 activity by enhancing its stability and cell surface expression. Down-regulates the response to bacterial lipopolysaccharide (LPS) via its role in IFNAR1 deubiquitination.

 Tel: 1-631-559-9269 1-516-512-3133

 Email: info@creative-biomart.com  Fax: 1-631-938-8127

 45-1 Ramsey Road, Shirley, NY 11967, USA

Molecular Mass	36.6 kDa
AA Sequence	MEVAEPSSPTEEEEEEEEHSAEPRPRTRSNPEGAEDRAVGAQASVGSRSEGEGEA ASADDGSLNTSGAGPKSWQVPPPAPQVQIRTPRVNCPKVIICLDLSEEMSLPKLES FNGSKTNALNVSQKMIEMFVRTKHKIDKSHEFALVVVNDTAWLSGLTSDPRELCSC LYDLETASCSTFNLEGLFSLIQQKTELPVTENVQTIPPPYVVRTILVYSRPPCQPQFSL TEPMKKMFQCPYFFFDVVYIHNGTEEKEEEMSWKDMFAFMGSLDTKGTSYKYEVA LAGPALELHNCMAKLLAHPLQRPCQSHASYSLLEEEDEAIEVEATVTRTRPLEQKLIS EEDLAANDILDYKDDDDKV
Purity	> 80% as determined by SDS-PAGE and Coomassie blue staining
Stability	Stable for 3 months from receipt of products under proper storage and handling conditions.
Storage	Store at -80 centigrade. Avoid repeated freeze-thaw cycles.
Concentration	50 µg/mL as determined by BCA
Storage Buffer	100 mM glycine, 25 mM Tris-HCl, pH 7.3.

GENE INFORMATION

Gene Name	BABAM1 BRISC and BRCA1 A complex member 1 [Homo sapiens (human)]
Official Symbol	BABAM1
Synonyms	BABAM1; BRISC and BRCA1 A complex member 1; C19orf62, chromosome 19 open reading frame 62; BRISC and BRCA1-A complex member 1; FLJ20571; HSPC142; Mediator of Rap80 Interactions and Targeting 40 kD; MERIT40; NBA1; new component of the BRCA1 A complex; BRCA1-A complex subunit MERIT40; new

 Tel: 1-631-559-9269 1-516-512-3133

 Email: info@creative-biomart.com  Fax: 1-631-938-8127

 45-1 Ramsey Road, Shirley, NY 11967, USA

component of the BRCA1-A complex; new component of the BRCAA1 A complex; mediator of Rap80 interactions and targeting 40 kDa; mediator of RAP80 interactions and targeting subunit of 40 kDa; C19orf62;

Gene ID [29086](#)

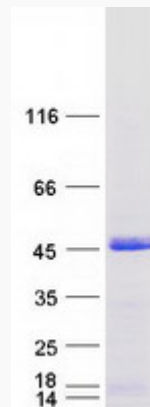
mRNA Refseq [NM_001033549](#)

Protein Refseq [NP_001028721](#)

MIM [612766](#)

UniProt ID [Q9NWV8](#)

SDS-PAGE



 Tel: 1-631-559-9269 1-516-512-3133

 Email: info@creative-biomart.com  Fax: 1-631-938-8127

 45-1 Ramsey Road, Shirley, NY 11967, USA