

# Recombinant Human beta-site APP-cleaving enzyme 1 Protein, His tagged

**Cat. No.** BACE1-13H    **Lot. No.** (See product label)

## SPECIFICATION

<b>Product Overview</b>	Recombinant human BACE-1, fused to His-tag at C-terminus, was expressed in insect cell and purified by using conventional chromatography techniques.
<b>Species</b>	Human
<b>Source</b>	Baculovirus
<b>ProteinLength</b>	22-457aa
<b>Description</b>	This gene encodes a member of the peptidase A1 family of aspartic proteases. Alternative splicing results in multiple transcript variants, at least one of which encodes a preproprotein that is proteolytically processed to generate the mature protease. This transmembrane protease catalyzes the first step in the formation of amyloid beta peptide from amyloid precursor protein. Amyloid beta peptides are the main constituent of amyloid beta plaques, which accumulate in the brains of human Alzheimer's disease patients.
<b>Tag</b>	C-His
<b>Form</b>	Liquid
<b>Bio-activity</b>	> 5 pmol/min/μg in which one unit will convert 1.0 pmole of Mca-SEVNLDAEFRK(Dnp)RR-NH <sub>2</sub> to MCA- Pro-Leu-OH per minute at pH 3.5 at 25 centigrade.

 Tel: 1-631-559-9269    1-516-512-3133

 Email: [info@creative-biomart.com](mailto:info@creative-biomart.com)     Fax: 1-631-938-8127

 45-1 Ramsey Road, Shirley, NY 11967, USA

<b>Molecular Mass</b>	49.2 kDa
<b>AA Sequence</b>	TQHGIRLPLRSGLGAPLGLRLPRETDEEPEEPGRRGSFVEMVDNLRGKSGQGY VEMTVGSPQTLNILVDTGSSNFAVGAAPHPFLHRYRQLSSTYRDLRKGVYV TQGWEGELGTDLVSIPHGPNVTVRANIAAITESDKFFINGSNWEGILGLAYAEI RPPDDSLEPFFDSLQKTHVNLVSLQCGAGFPLNQSEVLASVGGSMIIGGIDH SLYTGSLWYTPIRREWYVEIIVRVEINGQDLKMDCKEYNYDKSIVDSGTTN LRLPKKVFEAAVKSIIKAAASSTEKFPDGFVLGEQLVCWQAGTTPWNIFPVIS LYLMGEVTNQSFRTILPQQYLRPVEDVATSQDDCYKFAISQSSTGTVMGAVI MEGFYVVFDRARKRIGFAVSA CHVHDEFRTAAVEGPFVTLDMEDCGYNIPQTDESTLMT
<b>Endotoxin</b>	< 1 EU/μg, determined by LAL method.
<b>Purity</b>	> 90% by SDS-PAGE
<b>Applications</b>	SDS-PAGE, Enzyme Activity
<b>Storage</b>	Can be stored at +2 to +8 centigrade for 1 week. For long term storage, aliquot and store at -20 to -80 centigrade. Avoid repeated freezing and thawing cycles.
<b>Concentration</b>	0.5 mg/mL (determined by BCA assay)
<b>Storage Buffer</b>	Phosphate-Buffered Saline (pH 7.4) containing 10% glycerol
<b>Notes</b>	For research use only. This product is not intended or approved for human, diagnostics or veterinary use.
<b>References</b>	1. Andrew RJ., et al. (2013) Proc Natl Acad Sci U S A. 114:E9665-E9674. 2. Brendel M., et al. (2018) Theranostics. 8:4957-4968.

## GENE INFORMATION

 Tel: 1-631-559-9269 1-516-512-3133

 Email: [info@creative-biomart.com](mailto:info@creative-biomart.com)  Fax: 1-631-938-8127

 45-1 Ramsey Road, Shirley, NY 11967, USA

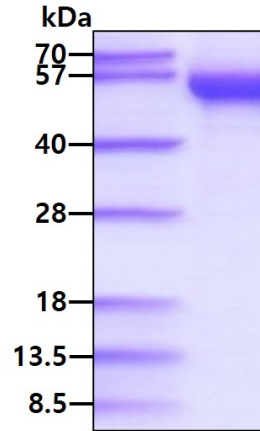
<b>Gene Name</b>	BACE1 beta-site APP-cleaving enzyme 1 [ Homo sapiens (human) ]
<b>Official Symbol</b>	BACE1
<b>Synonyms</b>	BACE1; beta-site APP-cleaving enzyme 1; BACE, beta site APP cleaving enzyme; beta-secretase 1; asp 2; memapsin-2; APP beta-secretase; aspartyl protease 2; beta-site APP cleaving enzyme 1; beta-secretase 1 precursor variant 1; transmembrane aspartic proteinase Asp2; membrane-associated aspartic protease 2; beta-site amyloid beta A4 precursor protein-cleaving enzyme; ASP2; BACE; HSPC104; FLJ90568; KIAA1149;
<b>Gene ID</b>	23621
<b>mRNA Refseq</b>	NM_012104
<b>Protein Refseq</b>	NP_036236
<b>MIM</b>	604252
<b>UniProt ID</b>	P56817

 Tel: 1-631-559-9269 1-516-512-3133


 Email: [info@creative-biomart.com](mailto:info@creative-biomart.com)  Fax: 1-631-938-8127

 45-1 Ramsey Road, Shirley, NY 11967, USA

SDS-PAGE



3  $\mu$ g by SDS-PAGE under reducing condition and visualized by coomassie blue stain.

 Tel: 1-631-559-9269 1-516-512-3133

 Email: [info@creative-biomart.com](mailto:info@creative-biomart.com)  Fax: 1-631-938-8127

 45-1 Ramsey Road, Shirley, NY 11967, USA