

## Recombinant Human BACE1 protein, rFc-tagged

Cat. No. BACE1-3681H Lot. No. (See product label)

### SPECIFICATION

<b>Product Overview</b>	Recombinant Human BACE1 protein(P56817-1)(Thr22-Thr457), fused with C-terminal rFc tag, was expressed in HEK293.
<b>Species</b>	Human
<b>Source</b>	HEK293
<b>Form</b>	Lyophilized from 0.22 µm filtered solution in PBS, pH 7.4. Normally 5% trehalose and 5% mannitol are added as protectants before lyophilization.
<b>Molecular Mass</b>	74.7 kDa
<b>Endotoxin</b>	<0.1 EU/µg protein, LAL method
<b>Purity</b>	>90 %, SDS-PAGE
<b>Storage</b>	It is recommended that the protein be aliquoted for optimal storage. Avoid repeated freeze-thaw cycles. Until expiry date, -20°C to -80°C as lyophilized proteins. 3 months, -20°C to -80°C under sterile conditions after reconstitution.
<b>Reconstitution</b>	Briefly centrifuge the tube before opening. Reconstitute at 0.1-0.5 mg/mL in sterile water.

### GENE INFORMATION

 Tel: 1-631-559-9269 1-516-512-3133

 Email: [info@creative-biomart.com](mailto:info@creative-biomart.com)  Fax: 1-631-938-8127

 45-1 Ramsey Road, Shirley, NY 11967, USA

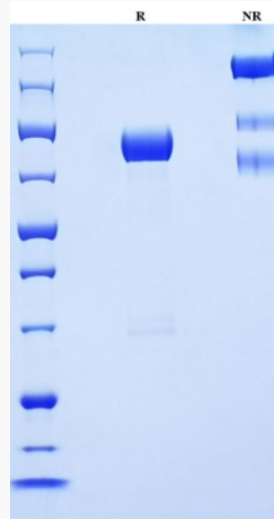
<b>Gene Name</b>	BACE1 beta-site APP-cleaving enzyme 1 [ Homo sapiens ]
<b>Official Symbol</b>	BACE1
<b>Synonyms</b>	BACE1; beta-site APP-cleaving enzyme 1; BACE, beta site APP cleaving enzyme; beta-secretase 1; asp 2; memapsin-2; APP beta-secretase; aspartyl protease 2; beta-site APP cleaving enzyme 1; beta-secretase 1 precursor variant 1; transmembrane aspartic proteinase Asp2; membrane-associated aspartic protease 2; beta-site amyloid beta A4 precursor protein-cleaving enzyme; ASP2; BACE; HSPC104; FLJ90568; KIAA1149;
<b>Gene ID</b>	23621
<b>mRNA Refseq</b>	NM_001207048
<b>Protein Refseq</b>	NP_001193977
<b>MIM</b>	604252
<b>UniProt ID</b>	P56817

 Tel: 1-631-559-9269 1-516-512-3133

 Email: [info@creative-biomart.com](mailto:info@creative-biomart.com)  Fax: 1-631-938-8127

 45-1 Ramsey Road, Shirley, NY 11967, USA

SDS-PAGE



 Tel: 1-631-559-9269 1-516-512-3133

 Email: [info@creative-biomart.com](mailto:info@creative-biomart.com)  Fax: 1-631-938-8127

 45-1 Ramsey Road, Shirley, NY 11967, USA