

Recombinant Human BACE1 protein

Cat. No. BACE1-6791H Lot. No. (See product label)

SPECIFICATION

Product Overview	Recombinant Human BACE1protein(P56817)(454aa) was expressed in E. coli.
Species	Human
Source	E.coli
ProteinLength	454aa
Tag	Non
Form	20mM Tris.Cl, 0.4M Urea, 0.2M NaCl, pH8.0.
Molecular Mass	50kDa
Storage	Store at -80°C and avoid repeated freeze-thaw cycles.
Reconstitution	It is recommended that sterile water be added to the vial to prepare a stock solution of 0.2 ug/ul. Centrifuge the vial at 4°C before opening to recover the entire contents.

GENE INFORMATION

Gene Name	BACE1 beta-site APP-cleaving enzyme 1 [Homo sapiens]
Official Symbol	BACE1

 Tel: 1-631-559-9269 1-516-512-3133

 Email: info@creative-biomart.com  Fax: 1-631-938-8127

 45-1 Ramsey Road, Shirley, NY 11967, USA

Synonyms BACE1; beta-site APP-cleaving enzyme 1; BACE, beta site APP cleaving enzyme; beta-secretase 1; asp 2; memapsin-2; APP beta-secretase; aspartyl protease 2; beta-site APP cleaving enzyme 1; beta-secretase 1 precursor variant 1; transmembrane aspartic proteinase Asp2; membrane-associated aspartic protease 2; beta-site amyloid beta A4 precursor protein-cleaving enzyme; ASP2; BACE; HSPC104; FLJ90568; KIAA1149;

Gene ID [23621](#)

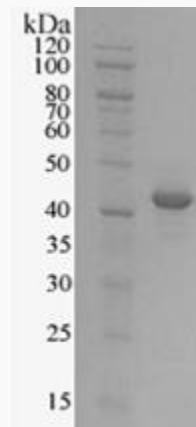
mRNA Refseq [NM_001207048](#)

Protein Refseq [NP_001193977](#)

MIM [604252](#)

UniProt ID [P56817](#)

SDS-PAGE



 Tel: 1-631-559-9269 1-516-512-3133

 Email: info@creative-biomart.com  Fax: 1-631-938-8127

 45-1 Ramsey Road, Shirley, NY 11967, USA