

Recombinant Human BACE1 protein, His & GST-tagged

Cat. No. BACE1-713H Lot. No. (See product label)

SPECIFICATION

Product Overview	Recombinant Human BACE1 aa. (Phe170~Thr428 (Accession# P56817)) fused with N-terminal His & GST tag was produced in E. coli cells.
Species	Human
Source	E.coli
ProteinLength	Phe170~Thr428
Description	This gene encodes a member of the peptidase A1 family of aspartic proteases. Alternative splicing results in multiple transcript variants, at least one of which encodes a preproprotein that is proteolytically processed to generate the mature protease. This transmembrane protease catalyzes the first step in the formation of amyloid beta peptide from amyloid precursor protein. Amyloid beta peptides are the main constituent of amyloid beta plaques, which accumulate in the brains of human Alzheimer's disease patients.
Form	Freeze-dried powder
Molecular Mass	Predicted Molecular Mass: 59.1kDa
Endotoxin	<1.0EU per 1g (determined by the LAL method)
Purity	>90%

 Tel: 1-631-559-9269 1-516-512-3133

 Email: info@creative-biomart.com  Fax: 1-631-938-8127

 45-1 Ramsey Road, Shirley, NY 11967, USA

Characteristic	The isoelectric point is 5.2.
Applications	SDS-PAGE; WB; ELISA; IP
Stability	The thermal stability is described by the loss rate. The loss rate was determined by accelerated thermal degradation test, that is, incubate the protein at 37°C for 48h, and no obvious degradation and precipitation were observed. The loss rate is less than 5% within the expiration date under appropriate storage condition.
Storage	Avoid repeated freeze/thaw cycles. Store at 2-8°C for one month. Aliquot and store at -80°C for 12 months.
Storage buffer	Supplied as lyophilized form in 20mM Tris, 150mM NaCl, pH8.0, containing 1mM EDTA, 1mM DTT, 0.01% sarcosyl, 5% trehalose, and preservative
Reconstitution	Reconstitute in sterile ddH ₂ O.

GENE INFORMATION

Gene Name	BACE1 beta-secretase 1 [Homo sapiens (human)]
Official Symbol	BACE1
Synonyms	BACE1; beta-secretase 1; ASP2; BACE; HSPC104; beta-secretase 1; APP beta-secretase; asp 2; aspartyl protease 2; beta-secretase 1 precursor variant 1; beta-site APP cleaving enzyme 1; beta-site APP-cleaving enzyme; beta-site amyloid beta A4 precursor protein-cleaving enzyme; memapsin-2; membrane-associated aspartic protease 2; transmembrane aspartic proteinase Asp2
Gene ID	23621

 Tel: 1-631-559-9269 1-516-512-3133

 Email: info@creative-biomart.com  Fax: 1-631-938-8127

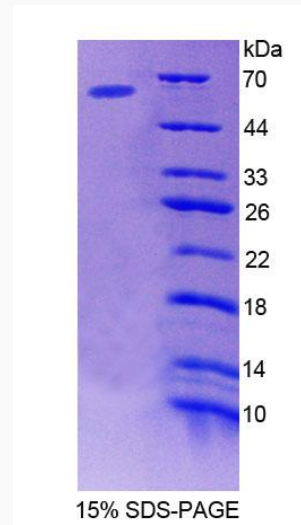
 45-1 Ramsey Road, Shirley, NY 11967, USA

mRNA Refseq [NM_001207049.1](#)

Protein Refseq [NP_001193978.1](#)

UniProt ID [P56817](#)

SDS-PAGE



 Tel: 1-631-559-9269 1-516-512-3133

 Email: info@creative-biomart.com  Fax: 1-631-938-8127

 45-1 Ramsey Road, Shirley, NY 11967, USA