

Recombinant Human BACE1 protein, His-tagged

Cat. No. BACE1-891H Lot. No. (See product label)

SPECIFICATION

Product Overview	Recombinant Human BACE1 protein(NP_036236.1)(Thr22-Thr457), fused with C-terminal His tag, was expressed in HEK293.
Species	Human
Source	HEK293
ProteinLength	Thr22-Thr457
Tag	C-His
Form	Lyophilized from 0.22µm filtered solution in PBS (pH 7.4). Normally 5% trehalose is added as protectant before lyophilization.
Bio-activity	Measured by its ability to cleave a fluorogenic peptide substrate, Mca-SEVNLDAEFRK(Dpn)RR-NH ₂ . The specific activity is >3.5 pmol/min/µg.
Molecular Mass	The protein has a predicted MW of 49.5 kDa. Due to glycosylation, the protein migrates to 55-70 kDa based on Tris-Bis PAGE result.
Endotoxin	Less than 1EU per µg by the LAL method.
Purity	> 95% as determined by Tris-Bis PAGE; > 95% as determined by HPLC
Storage	Reconstituted protein stable at -80°C for 12 months, 4°C for 1 week. Use a manual

 Tel: 1-631-559-9269 1-516-512-3133

 Email: info@creative-biomart.com  Fax: 1-631-938-8127

 45-1 Ramsey Road, Shirley, NY 11967, USA

defrost freezer and avoid repeated freeze-thaw cycles.

Reconstitution

Centrifuge tubes before opening. Reconstituting to a concentration more than 100 µg/ml is recommended. Dissolve the lyophilized protein in distilled water.

GENE INFORMATION

Gene Name [BACE1 beta-site APP-cleaving enzyme 1 \[Homo sapiens \]](#)

Official Symbol [BACE1](#)

Synonyms

BACE1; beta-site APP-cleaving enzyme 1; BACE, beta site APP cleaving enzyme; beta-secretase 1; asp 2; memapsin-2; APP beta-secretase; aspartyl protease 2; beta-site APP cleaving enzyme 1; beta-secretase 1 precursor variant 1; transmembrane aspartic proteinase Asp2; membrane-associated aspartic protease 2; beta-site amyloid beta A4 precursor protein-cleaving enzyme; ASP2; BACE; HSPC104; FLJ90568; KIAA1149;

Gene ID [23621](#)

mRNA Refseq [NM_001207048](#)


Protein Refseq [NP_001193977](#)

MIM [604252](#)

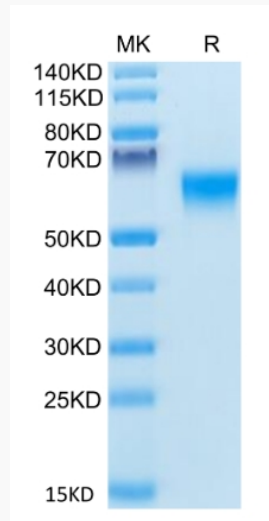
UniProt ID [P56817](#)

 Tel: 1-631-559-9269 1-516-512-3133

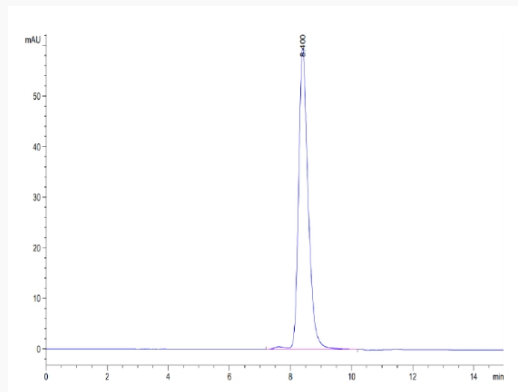
 Email: info@creative-biomart.com  Fax: 1-631-938-8127


 45-1 Ramsey Road, Shirley, NY 11967, USA

Tris-Bis PAGE




SEC-HPLC



 Tel: 1-631-559-9269 1-516-512-3133

 Email: info@creative-biomart.com  Fax: 1-631-938-8127

 45-1 Ramsey Road, Shirley, NY 11967, USA