

# Recombinant Human BACE2 Protein, Myc/DDK-tagged, C13 and N15-labeled

Cat. No. BACE2-2540H Lot. No. (See product label)

## SPECIFICATION

### Product Overview

BACE2 MS Standard C13 and N15-labeled recombinant protein (NP\_036237) with a C-terminal MYC/DDK tag, was expressed in HEK293 cells.

### Species

Human

### Source

HEK293

### Description

This gene encodes an integral membrane glycoprotein that functions as an aspartic protease. The encoded protein cleaves amyloid precursor protein into amyloid beta peptide, which is a critical step in the etiology of Alzheimer's disease and Down syndrome. The protein precursor is further processed into an active mature peptide. Alternative splicing results in multiple transcript variants.

### Molecular Mass

56.18 kDa

### AA Sequence

MGALARALLPLLAQWLLRAAPELAPAPFTLPLRVAAATNRVVAPTGGPGTGAERHA  
 DGLALALEPALASPAGAAANFLAMVDNLQGDSGRGYYLEMLIGTPPQKLQILVDTGSS  
 NFAVAGTPHSYIDTYFDTERSSTYRSKGFVDVTKYTQGSWTGFVGEDLV TIPKGFNT  
 SFLVNIATIFESENFFLPGIKWNGILGLAYATLAKPSSSLETFDLSVTQANIPNVFSMQ  
 MCGAGLPVAGSGTNGGSLVLGGIEPSLYKGDWYTPIKEEWYYQIEILKLEIGGQSLN  
 LDCREYNADKAIVDSGTTLLRLPQKVFDAVVEAVARASLIPEFSDGFWTGSQ LACWT  
 NSETPWSYFPKISYLRDENSRRSFRITILPQLYIQPMMGAGLNYECYRFGISPSTNAL  
 VIGATVMEGFYVIFDRAQKRVGFAASPCAEIAGA AVSEISGPFSTEDVASNCVPAQSL

Tel: 1-631-559-9269 1-516-512-3133

Email: [info@creative-biomart.com](mailto:info@creative-biomart.com) Fax: 1-631-938-8127

45-1 Ramsey Road, Shirley, NY 11967, USA

SEPILWIVSYALMSVCGAILLVLIVLLLLPFRCQRRPRDPEVVNDESSLVRHRWKTRTR  
RPLEQKLISEEDLAANDILDYKDDDDKV

**Purity** > 80% as determined by SDS-PAGE and Coomassie blue staining

**Stability** Stable for 3 months from receipt of products under proper storage and handling conditions.

**Storage** Store at -80 centigrade. Avoid repeated freeze-thaw cycles.

**Concentration** 50 µg/mL as determined by BCA

**Storage Buffer** 100 mM glycine, 25 mM Tris-HCl, pH 7.3.

## GENE INFORMATION

**Gene Name** BACE2 beta-site APP-cleaving enzyme 2 [ Homo sapiens (human) ]

**Official Symbol** BACE2

**Synonyms** BACE2; beta-site APP-cleaving enzyme 2; AEPLC; beta-secretase 2; ALP56; CEAP1; DRAP; asp 1; memapsin-1; theta-secretase; beta secretase 2; aspartyl protease 1; 56 kDa aspartic-like protease; aspartic-like protease 56 kDa; down region aspartic protease; beta-site APP cleaving enzyme 2; Down syndrome region aspartic protease; transmembrane aspartic proteinase Asp1; membrane-associated aspartic protease 1; beta-site amyloid precursor protein cleaving enzyme 2; beta-site amyloid beta A4 precursor protein-cleaving enzyme 2; ASP1; BAE2; ASP21; CDA13;

**Gene ID** 25825

**mRNA Refseq** NM\_012105

 Tel: 1-631-559-9269 1-516-512-3133

 Email: [info@creative-biomart.com](mailto:info@creative-biomart.com)  Fax: 1-631-938-8127

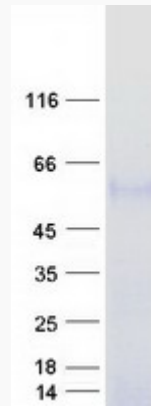
 45-1 Ramsey Road, Shirley, NY 11967, USA

**Protein Refseq** NP\_036237

**MIM** 605668

**UniProt ID** Q9Y5Z0

**SDS-PAGE**



 Tel: 1-631-559-9269 1-516-512-3133

 Email: [info@creative-biomart.com](mailto:info@creative-biomart.com)  Fax: 1-631-938-8127

 45-1 Ramsey Road, Shirley, NY 11967, USA